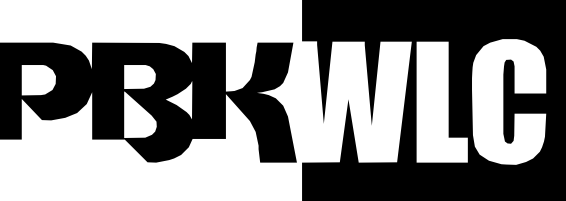
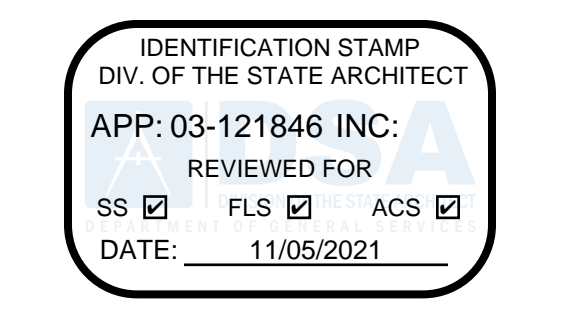


DRAWING CONVENTIONS

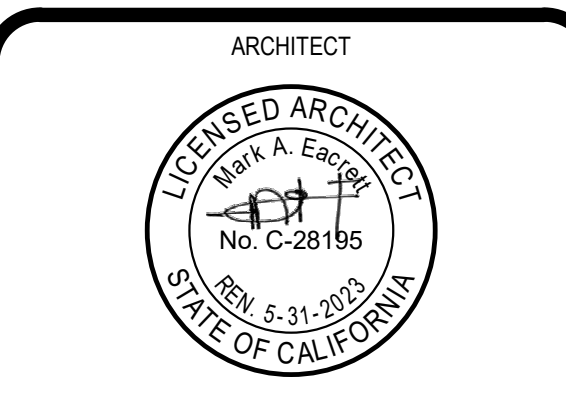
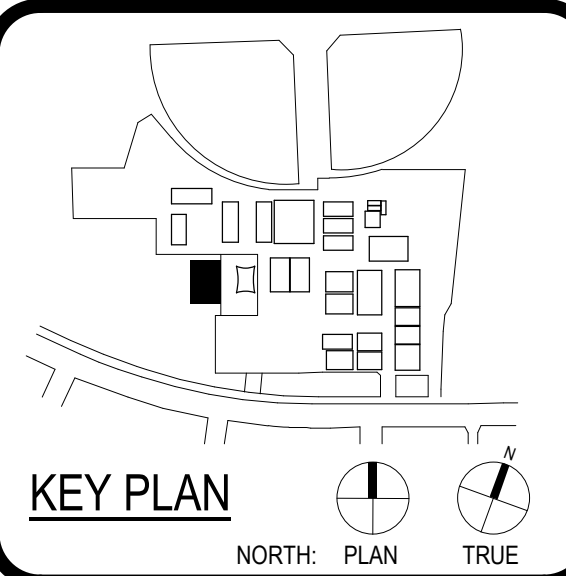
STATEMENT OF GENERAL CONFORMANCE

DRAWING INDEX



ARCHITECT PRK Architects, Inc. SOUTHERN CALIFORNIA 8163 Rochester Avenue, Suite 100 Rancho Cucamonga, California 91730-0729 909-987-0999 P

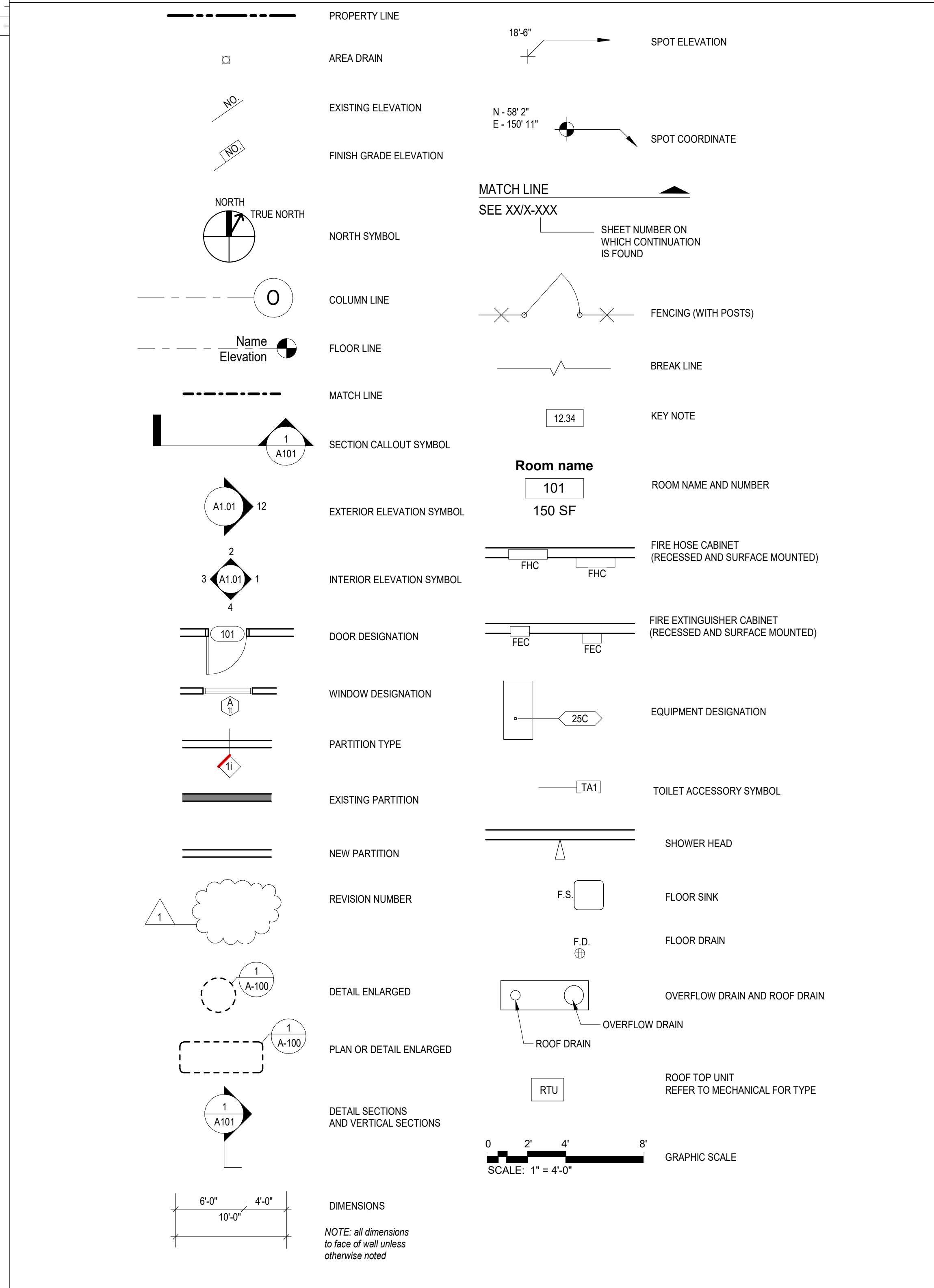
Wedge worth ES Portable Relocation



CLIENT HACIENDA LA PUENTE USD DATE 10/12/2021 PROJECT NUMBER P2127100AR

Table with columns: No., Description, Date. Contains drawing history entries.

CONSTRUCTION DOCUMENTS BUILDING NUMBER SHEET INDEX, DRAWING CONVENTIONS, AND LOCATION MAP

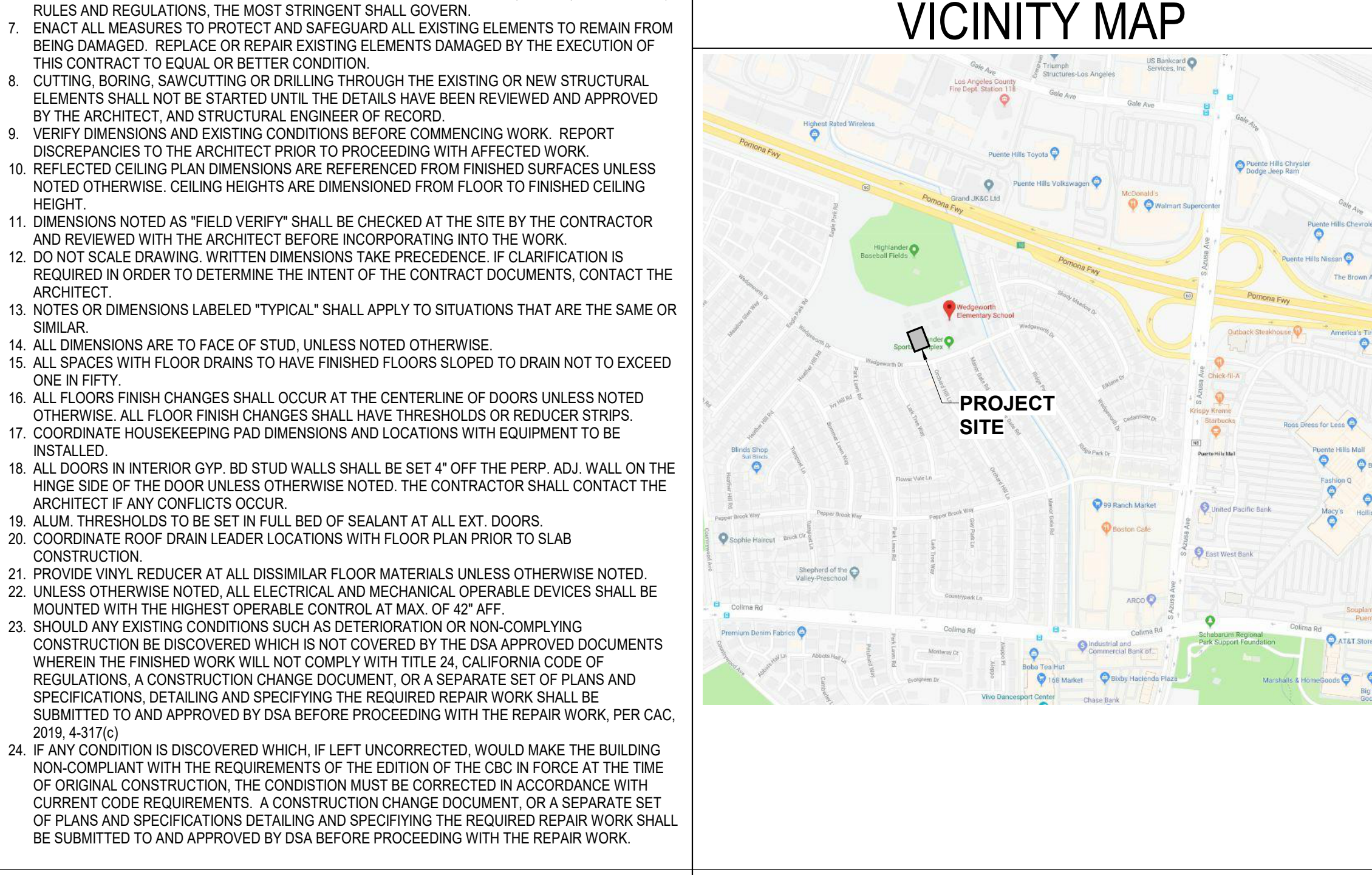


ABBREVIATIONS table with columns: A.D., A.D.A., A.F.G., A.H.J., A.C., A.C.P., A.C.T., A.D.J., A.L.T., A.L.L.M., A.S.P.H., A.C., A.D., A.D.A., A.F.G., A.H.J., A.C., A.C.P., A.C.T., A.D.J., A.L.T., A.L.L.M., A.S.P.H., B.U.R., B.D., B.L.D.G., B.L.K., B.M., C., C.J., C.M.U., C.W., C.B., C.A.B.T., C.F.M.F., C.L., C.L.G., C.L.R., C.O.L., C.O.M.P., C.O.N.C., C.O.N.D., C.O.R.R., C.P.T., C.E.R.A.M.I.C., C.T.G., C.T.S.K., D., D.P., D.S., D.I.A., D.I.M., D.T.L., D.W.G., E.J., E.Q., E.A., E.D.F., E.L., E.L.E.C.T., E.L.E.V. and their corresponding descriptions.

FOR ARCHITECTS/ENGINEERS WHO UTILIZE PLANS, INCLUDING BUT NOT LIMITED TO SHOP DRAWINGS, PREPARED BY OTHER LICENSED DESIGN PROFESSIONALS AND/OR CONSULTANTS (Application No. 03-121846 File No. 19-38) I certify that: [X] The drawings or sheets listed on the cover or index sheet * This drawing, page of specifications/calculations have been prepared by other design professionals or consultants who are licensed and/or authorized to prepare such drawings in this state. It has been examined by me for: 1) design intent and appears to meet the appropriate requirements of Title 24, California Code of Regulations and the project specifications prepared by me, and 2) coordination with my plans and specifications and is acceptable for incorporation into the construction of this project. The Statement of General Conformance "shall not be construed as relieving me of my rights, duties, and responsibilities under Sections 17302 and 81138 of the Education Code and Sections 4-336, 4-341 and 4-344" of Title 24, Part 1, (Title 24, Part 1, Section 4-317 (b))

DSA NOTES and SCOPE OF WORK sections. DSA NOTES list 11 items regarding code compliance, construction change documents, and inspection requirements. SCOPE OF WORK describes construction and services for a portable building relocation.

GENERAL NOTES and DEFERRED APPROVAL ITEMS. GENERAL NOTES list 15 items regarding construction details, materials, and safety. DEFERRED APPROVAL ITEMS are listed as NONE.



DRAWING INDEX table listing drawing titles and sheet numbers. GENERAL: G0.00 COVER SHEET, G0.01 SHEET INDEX, G0.02 ACCESSIBILITY SITE PLAN, G0.03 FIRE ACCESS SITE PLAN. CIVIL: C1.00 SITE IMPROVEMENT PLAN, C1.01 ASPHALT PAD INSTALLATION PLAN, C1.02 PORTABLE GRADING PLAN, C1.03 DETAIL SHEET, C1.04 WET UTILITY PLAN. DEMOLITION: D1.01 DEMOLITION SITE PLAN. ARCHITECTURAL: A1.01 ENLARGED SITE PLAN, A1.02 DETAILS, A1.03 PLAYGROUND EQUIPMENT PLAN & DETAILS. ELECTRICAL: E0.01 SYMBOLS LIST, E1.01 ELECTRICAL SITE PLAN, E2.01 POWER PLAN, E3.01 SINGLE LINE DIAGRAM, E4.01 DETAILS, E4.02 RAMP/FLOOR DIAGRAMS, E4A.01 FIRE ALARM INFORMATION, E4A.02 FIRE ALARM DETAILS, E4A.03 FIRE ALARM RISER DIAGRAM AND CALCULATIONS, E4A.01 FIRE ALARM FLOOR PLAN. MODULAR MANUFACTURER (CLASSROOM BUILDINGS) PC# 02-113876*: T5 TITLE SHEET, N3.0 SCHEDULES, A1.0 TYPICAL FLOOR PLAN, A1.2 RESTROOM FLOOR PLAN, S2.1 WOOD FOUNDATION PLAN, S2.4 WOOD FOUNDATION DETAILS, S10.0 RAMP PLANS & NOTES, S10.1 RAMP DETAILS, 1 COVER SHEET, 2 ACCESSIBLE RAMP ELEVATIONS & DETAILS, 3 ACCESSIBLE RAMP DETAILS & NOTES, 4 DETAILS AND NOTES. TOTAL SHEETS: 36

PROJECT DATA section. PROJECT ADDRESS: 16949 Wedgeworth Dr, Hacienda Heights, CA 91745. PORTABLE BUILDINGS: 1. OCCUPANCY CLASSIFICATION: E, 2. TYPE OF CONSTRUCTION: TYPE V/B, 3. TOTAL AREA OF EACH FLOOR (TABLE 502 - BASIC ALLOWABLE AREA): a. GROSS BUILDING AREA: 7200 SQ. FT., b. AUTOMATIC FIRE SPRINKLER SYSTEM: NONE, c. CANOPIES/OVERHANGS: 1.810 SQ. FT. TOTAL, 4. ALLOWABLE BUILDING AREA: 9,500 SQ. FT., 5. NO. OF STOREYS: 1.

CODES & STANDARDS and SHEET NUMBERING sections. CODES & STANDARDS lists applicable codes like California Building Code (CBC), California Fire Code (CFC), and various NFPA standards. SHEET NUMBERING shows a grid with A2.01A highlighted as the current sheet.