



MODULAR MANUFACTURER PROPRIETARY STATEMENT  
 THESE DRAWINGS AND THE MATERIAL CONTAINED THEREIN ARE THE PROPERTY OF AMERICAN MODULAR SYSTEMS, INC. (AMS) AND SHALL NOT BE REPRODUCED, COPIED OR OTHERWISE DISPOSED OF DIRECTLY OR INDIRECTLY AND SHALL NOT BE USED IN WHOLE OR IN PART TO ASSIST IN THE MAKING OF OR FOR THE PURPOSE OF FURNISHING ANY INFORMATION FOR THE MAKING OF DRAWINGS, PRINTS, APPARATUS OR PARTS THEREOF WITHOUT THE FULL KNOWLEDGE AND WRITTEN CONSENT OF AMS. ALL PATENTABLE MATERIAL CONTAINED HEREIN AND ORIGINATING WITH AMS SHALL BE THE SOLE PROPERTY OF AMS.

PRE-CHECKED SET NAME  
**24'x40' THRU 120'x40' STANDARD MODULAR BUILDINGS**

SITE SPECIFIC PROJECT NAME  
**HACIENDA LA PUENTE U.S.D. WEDGEWORTH ES (5) 36'x40' BUILDINGS**

SHEET TITLE  
**TYPICAL FLOOR PLAN**

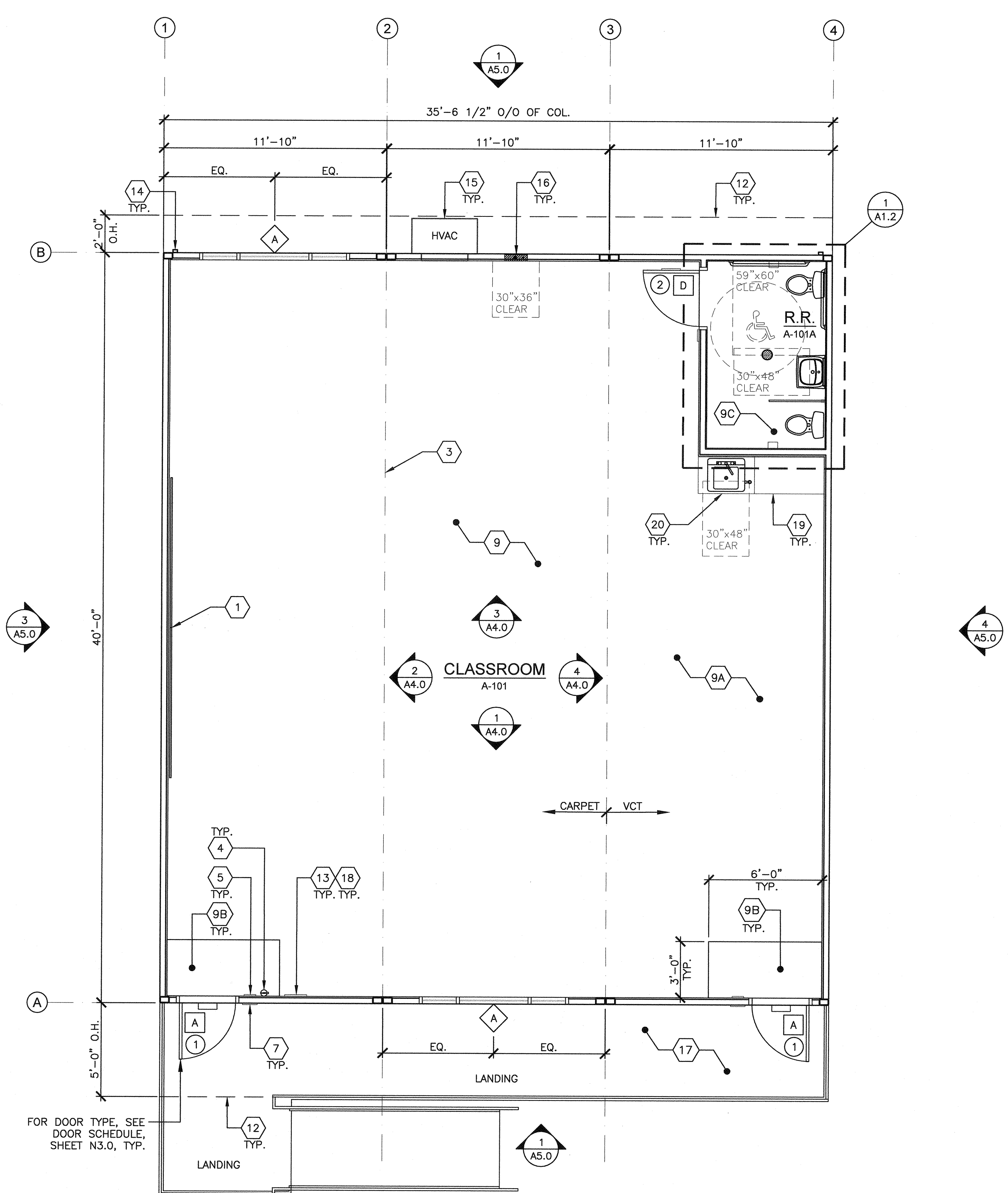


THESE DRAWINGS ARE PRELIMINARY AND NOT FOR CONSTRUCTION UNLESS STAMPED & SIGNED BY THE ENGINEER OF RECORD.  
 PROJECT SPECIFIC STATE AGENCY APPROVAL  
**IDENTIFICATION STAMP**  
 DIV. OF THE STATE ARCHITECT  
 03-121846  
 ACS FLS ACS  
 Date: 11/03/2021  
 ORIGINAL PC STATE AGENCY APPROVAL

**BASED ON PC# 02-113876**  
 PRE-CHECK (PC) DOCUMENT - CODE: 2013 CBC  
 A SEPARATE PROJECT APPLICATION FOR CONSTRUCTION IS REQUIRED

REVISIONS  
 05/17/2016 - PC REVISION  
 DRAWN BY: AB  
 SCALE: AS NOTED  
 DATE: 03/12/2018  
 SHEET NUMBER

**A1.0**



- 1 (2) 8'x4' MARKER BOARDS - SEE SHEET A4.0
- 2 NOT USED
- 3 TYP. MOD LINE
- 4 FIRE EXTINGUISHER - TOP OF HANDLE @ +48" A.F.F. 4" MAX PROTRUSION FROM WALL IF FIRE EXTINGUISHER IS ABOVE 27" A.F.F.
- 5 TACTILE EXIT SIGN PER DETAIL 10/N4.0 (BY OTHERS)
- 6 NOT USED
- 7 CLASSROOM ID # AND ISA PER DETAILS 5&9/N4.0 (BY OTHERS)
- 8 NOT USED
- 9 CARPET
- 9A VCT
- 9B WALK OFF MAT
- 9C VINYL FLOORING
- 10 NOT USED
- 11 NOT USED
- 12 OVERHANG ABOVE
- 13 OCCUPANT LOAD SIGN PER DETAIL 11/N4.0 (BY OTHERS) & FLOOR LIVE LOAD SIGN PER 2013 CBC.
- 14 DOWNSPOUT - DISCHARGE TO SPLASH BLOCK (UON) (QUANTITY AND LOCATION MAY VARY)
- 15 HVAC - SEE MECHANICAL
- 16 ELECTRICAL PANEL (LOCATION MAY VARY)
- 17 RAMP - (BY OTHERS) REFER TO 2/- & S10.0 & S10.1 FOR REQUIREMENTS
- 18 FLOOR LIVE LOAD & SNOW LOAD SIGN PER 2013 CBC
- 19 TALL CABINET
- 20 LOWER CABINET W/ ACCESSIBLE SINK, SEE 3/A7.2 FOR ANCHORAGE & 3/A1.0 FOR CLEARANCE

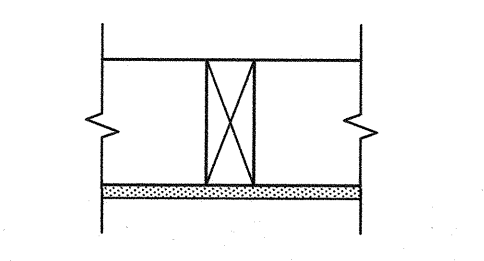
**KEY NOTES**

- ENERGY CONTROLS**
- DEMAND RESPONSE CONTROLS: ONLY REQUIRED IN BUILDINGS LARGER THAN 10,000 S.F., THEREFORE, NOT REQUIRED FOR THIS PC.
  - AUTOMATIC DAYLIGHTING CONTROLS: NOT REQUIRED IN ROOMS WHERE COMBINED INSTALLED LIGHTING POWER IN COMBINED SKYLIT & PRIMARY DAYLIT ZONES ARE <120 WATTS. INSTALLED WATTAGE IN PRIMARY SIDELIT DAY LIT ZONE IS 80 WATTS (2x 40w). THEREFORE, AUTOMATIC DAYLIGHTING CONTROLS ARE ONLY REQUIRED WHEN "SOLATUBES" ARE INSTALLED. SEE A1.1.
  - ENERGY MANAGEMENT CONTROL SYSTEM (EMCS) CONNECTION: PER TITLE 24 CODE, AN EMCS MAY BE INSTALLED TO COMPLY WITH THE REQUIREMENTS OF ONE OR MORE LIGHTING CONTROLS IF IT MEETS THE MINIMUM REQUIREMENTS. PC MAY CONTAIN OCCUPANCY SENSORS AND PHOTOCELL CONTROL LIGHTING, IN THAT CASE, AN EMCS IS NOT REQUIRED FOR THIS PC.
  - SOLAR - READY ZONE REQUIREMENTS: REQUIREMENTS, DETAIL & TABLE CAN BE FOUND ON SHEET A2.0

**ENERGY NOTES**

NOTE: ANY MONITORING EQUIPMENT OR ASSOCIATED SENSORS ARE SITE SPECIFIC AND ARE NOT INCLUDED IN THE BASE PC.

- ACOUSTIC CONTROLS**
- WHEN THE PRE-CHECK (PC) BUILDING IS SITE ADAPTED, THE BUILDING AND SITE FEATURES SHALL COMPLY WITH THE CALGREEN CODE, SECTION 5.507.4, FOR THE SPECIFIC SITE LOCATION.
  - MINIMUM WALL ASSEMBLIES: WALL ASSEMBLIES SHALL BE CONSTRUCTED PER DETAIL SHEETS AS.1, AS.3, AS.5, AS.7, & AS.8.0 WITH EITHER 2x4 WOOD STUDS OR 6" STEEL STUDS PER LISTED OPTIONS. MINIMUM STC RATINGS LISTED BELOW ARE PER THE CATALOG OF STC & IIC RATINGS FOR WALL AND FLOOR/CEILING ASSEMBLIES, PRODUCED BY THE OFFICE OF NOISE CONTROL - CA DEPARTMENT OF HEALTH SERVICES.

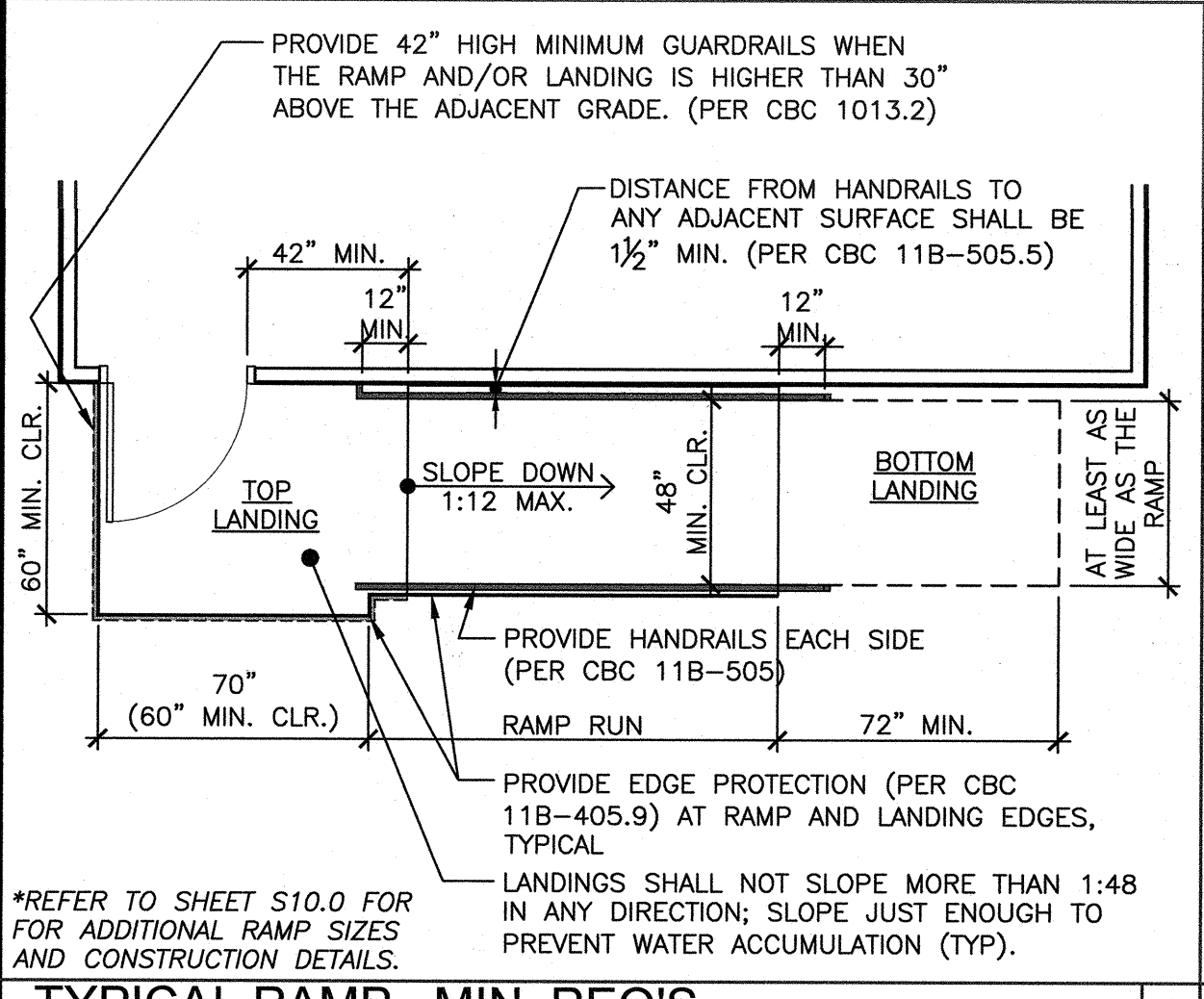


(1) LAYER 1/2" GYPSUM BOARD SECURED TO MIN. 2x4 STUDS @ 16" O.C. MAX.  
 STC=28 (CATALOG SECTION 1.2.1.5.4.1)  
 TEST REF.: NATIONAL RESEARCH COUNCIL OF CANADA - NRC #66

- IN THE EVENT THAT A PC CLASSROOM IS DESIGNED TO CONNECT TO ANOTHER PC CLASSROOM OR RESTROOM, INTERIOR SOUND TRANSMISSION IN THE INTERIOR ADJOINING WALL AND FLOOR/CEILING SHALL MEET THE MINIMUM REQUIREMENT OF A STC OF 40, PER CALGREEN CODE SECTION 507.4.3.
- MINIMUM WINDOW & DOOR RATINGS: ALL WINDOWS AND DOORS SPECIFIED ON THE SCHEDULES FOUND ON SHEET N3.0 OF THIS PACKAGE SHALL MEET A MINIMUM STC RATING OF 27.

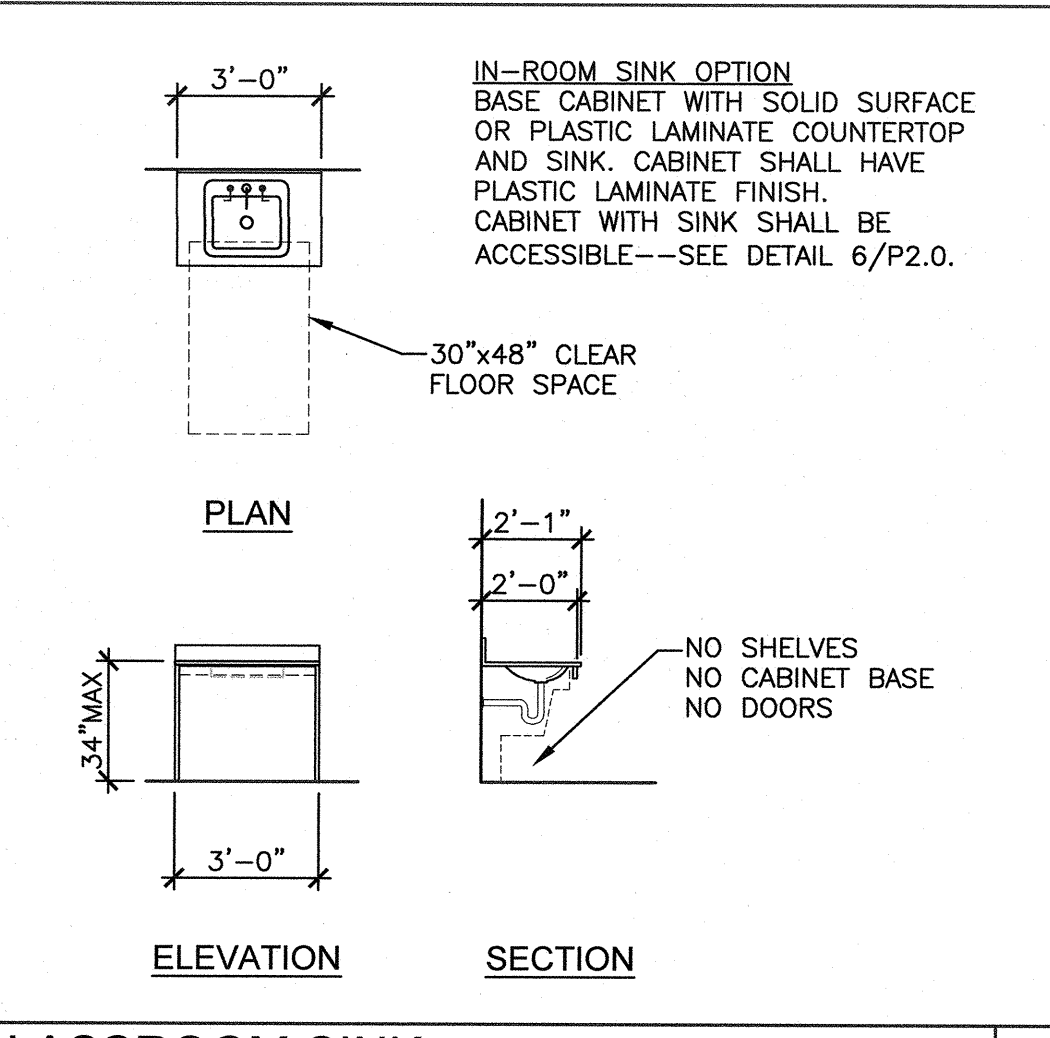
**TYPICAL FLOOR PLAN**

SCALE: 1/4" = 1'-0"



**TYPICAL RAMP - MIN. REQ'S**

SCALE: 1/4" = 1'-0"



**CLASSROOM SINK**

SCALE: 1/4" = 1'-0"

- REFER TO SHEETS N5.0 AND N5.1 FOR ADDITIONAL FLOOR PLAN CONFIGURATIONS.
  - INTERIOR WALLS MAY OCCUR THROUGHOUT BUILDING. REFER TO SHEETS S8.1 OR S9.1 FOR ATTACHMENTS.
  - PANIC HARDWARE COMPLYING WITH C.B.C. 1008.1.10 IS REQUIRED TO BE INSTALLED WHEN THE CONFIGURATION OF ANY ROOM PROVIDES AN OCCUPANT LOAD OF 50 OR GREATER.
  - IF OCCUPANCY LOAD EXCEEDS 50, PROVIDE A SECOND EXIT DOOR, PER CBC TABLE 1015.1.
  - FOR ROOMS OR SPACES CLASSIFIED AS AN ASSEMBLY OCCUPANCY, PROVIDE AN OCCUPANT LOAD SIGN (BY OTHERS) IN A CONSPICUOUS PLACE, NEAR THE MAIN EXIT, PER C.B.C. SECTION 1004.3.
- SITE NOTE**  
 3/16:12 (1%) MINIMUM TO 1/4:12 (2%) MAXIMUM GRADE FROM FACE OF BUILDING MUST BE ADHERED TO FOR WATER RUN-OFF. PONDING MAY OCCUR AROUND THE PERIMETER OF THE BUILDING.

**SHEET NOTES**

- (X) = KEY NOTE - SEE SHEET NOTES
- (O) = DOOR TYPE - SEE SCHEDULE SHEET N3.0
- (H) = DOOR HARDWARE - SEE HARDWARE SCHEDULE SHEET N3.0
- (W) = WINDOW TYPE - SEE SCHEDULE SHEET N3.0

**SYMBOLS LEGEND**

**ACOUSTIC NOTES**