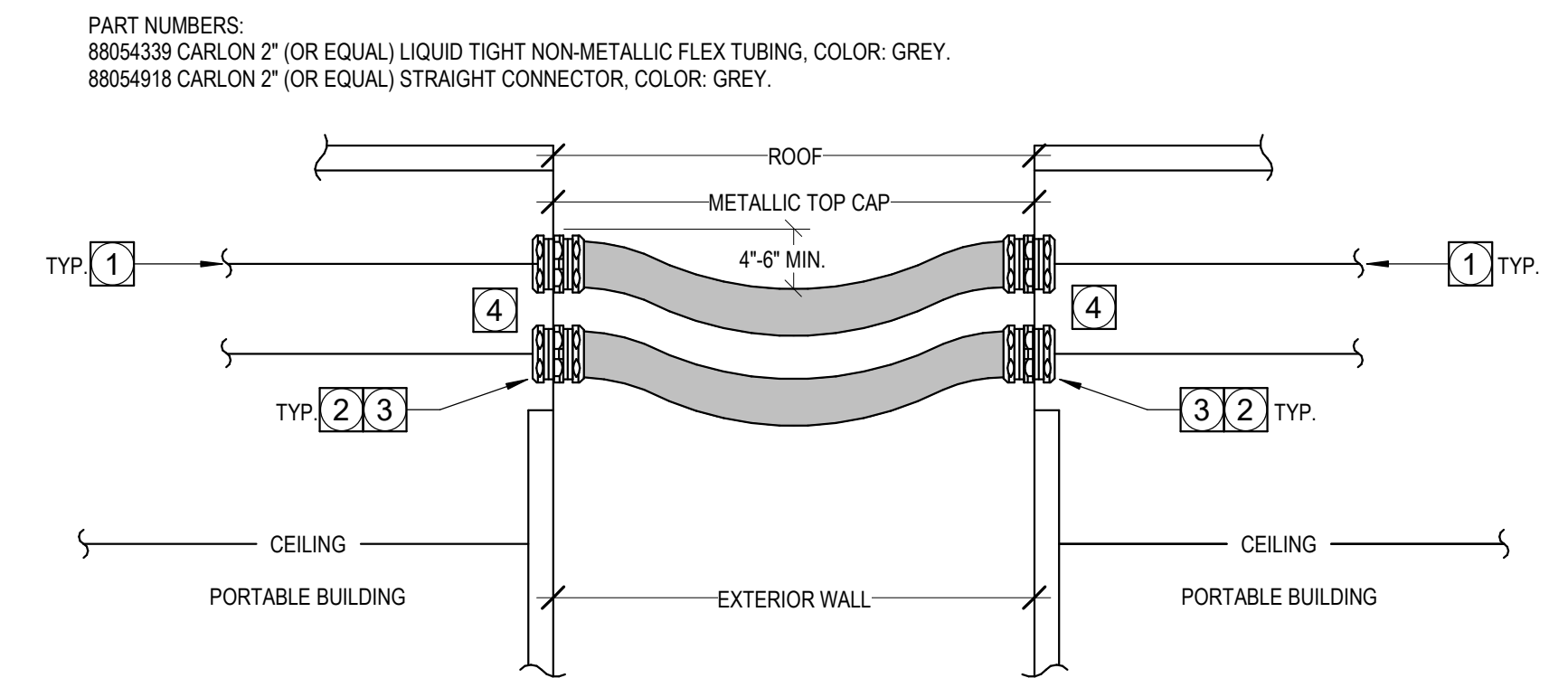


J-HOOK CABLE SUPPORT. N.T.S. 02

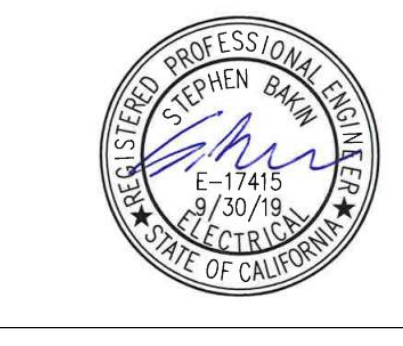


- LIQUID-TIGHT SLEEVING FOR PORTABLE(S) KEYNOTES:**
- 1 CABLING TO BE SUPPORTED WITHIN 24\"/>

LIQUID-TIGHT SLEEVES FOR PORTABLES NTS 01



ARCHITECTURE ENGINEERING INTERIORS  
 LANDSCAPE ARCHITECTURE PLANNING  
 949-261-1001 Office  
 949-260-1190 Fax  
**LPA Design Studios.com**  
 5161 California Avenue, Suite 100  
 Irvine, California 92617



This document and all other project documents, ideas, aesthetics and designs incorporated herein are instruments of service. All project documents are copyright protected, are the property of LPA, Inc. (LPA) and cannot be lawfully used in whole or in part for any project or purpose except as set forth in the contractual agreement between LPA and its Client. The unauthorized disclosure and/or use of the project documents (including the creation of derivative works), may give rise to liability for copyright infringement, unlawful disclosure, use or misappropriation of property rights held by LPA. The unauthorized use of the project documents will give rise to the recovery of monetary losses and damages including attorney fees and costs for which the unauthorized user will be held liable. Project documents describe the design intent of the work and are not a representation of as-built or existing conditions. LPA is not responsible for any discrepancies between the project documents and the existing conditions.

© LPA, Inc.

**MADISON ELEMENTARY SCHOOL - INTERIM HOUSING**  
 3635 Madison Street, Riverside, CA, 92504  
 Developed for  
 Riverside Unified School District

Revision	Date

Submittal	Date
50% CONSTRUCTION DOCUMENTS	11/19/18
85% CONSTRUCTION DOCUMENTS	12/05/18
100% CONSTRUCTION DOCUMENTS - DSA	12/19/18
DSA SUBMITTAL V2	02/26/19

Job No. 1720520  
 Date 02/26/2019  
 Checked by K. CARTER  
 Scale NTS

**TECHNOLOGY PATHWAYS DETAILS**