



ARCHITECTURE ENGINEERING INTERIORS
 LANDSCAPE ARCHITECTURE PLANNING
 949-261-1001 Office
 949-260-1190 Fax
 LPADesignStudios.com
 5161 California Avenue, Suite 100
 Irvine, California 92617

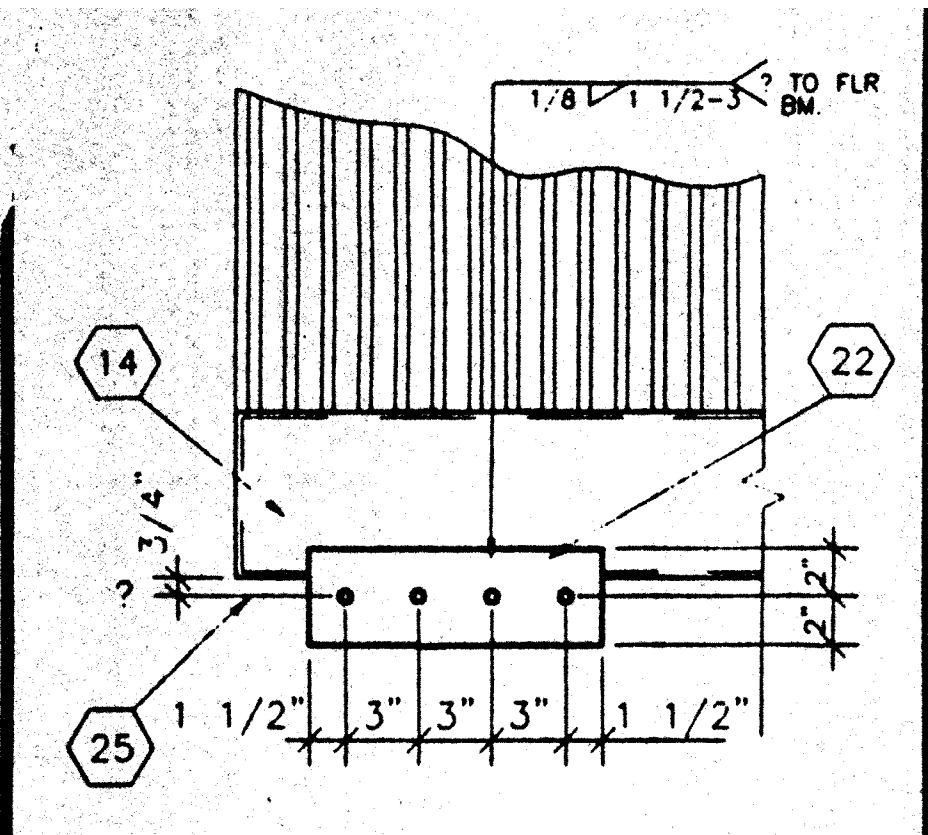
This document and all other project documents, ideas, aesthetics and designs incorporated herein are instruments of service. All project documents are copyright protected, are the property of LPA, Inc. (LPA) and cannot be lawfully used in whole or in part for any project or purpose except as set forth in the contractual agreement between LPA and its Client. The unauthorized disclosure and/or use of the project documents (including the creation of derivative works) may give rise to liability for copyright infringement, unlawful disclosure, use or misappropriation of property rights held by LPA. The unauthorized use of the project documents will give rise to the recovery of monetary losses and damages including attorney fees and costs for which the unauthorized user will be held liable. Project documents describe the design intent of the work and are not a representation of as-built or existing conditions. LPA is not responsible for any discrepancies between the project documents and the existing conditions.

© LPA, Inc.

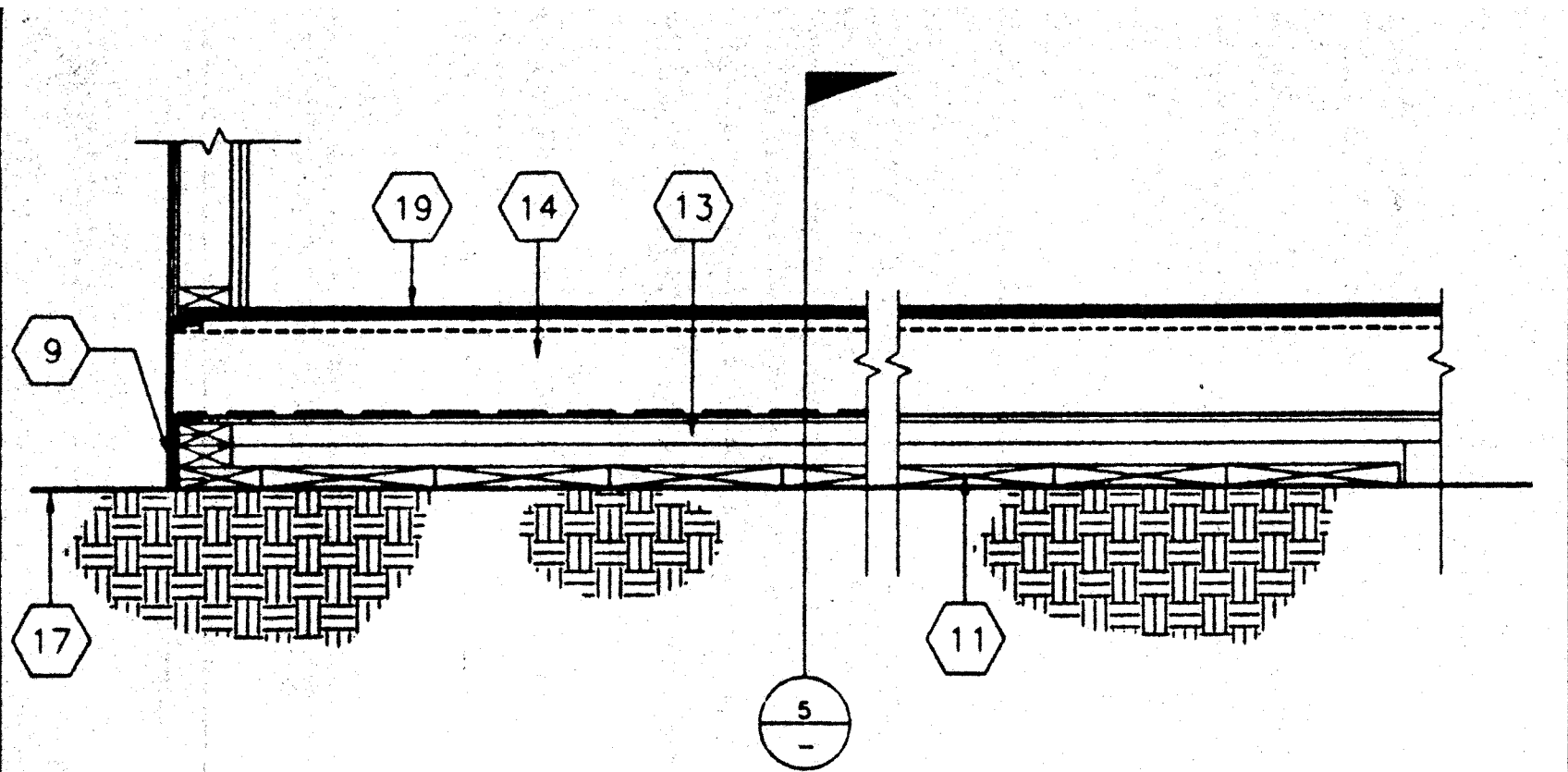
MADISON ELEMENTARY SCHOOL
 INTERIM HOUSING PORTABLES

3635 Madison Street
 Riverside, CA 92504

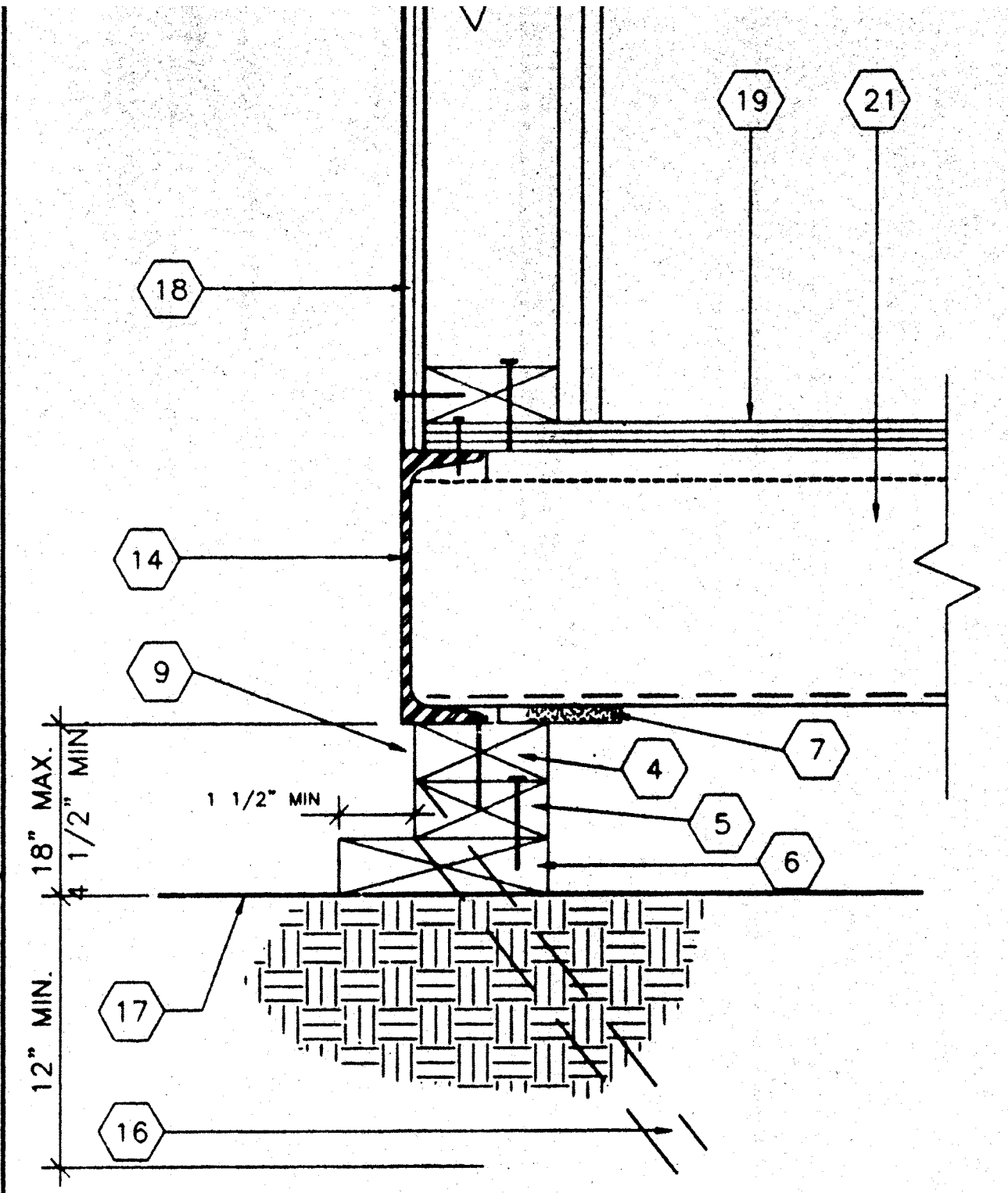
Developed for
 Riverside Unified School District



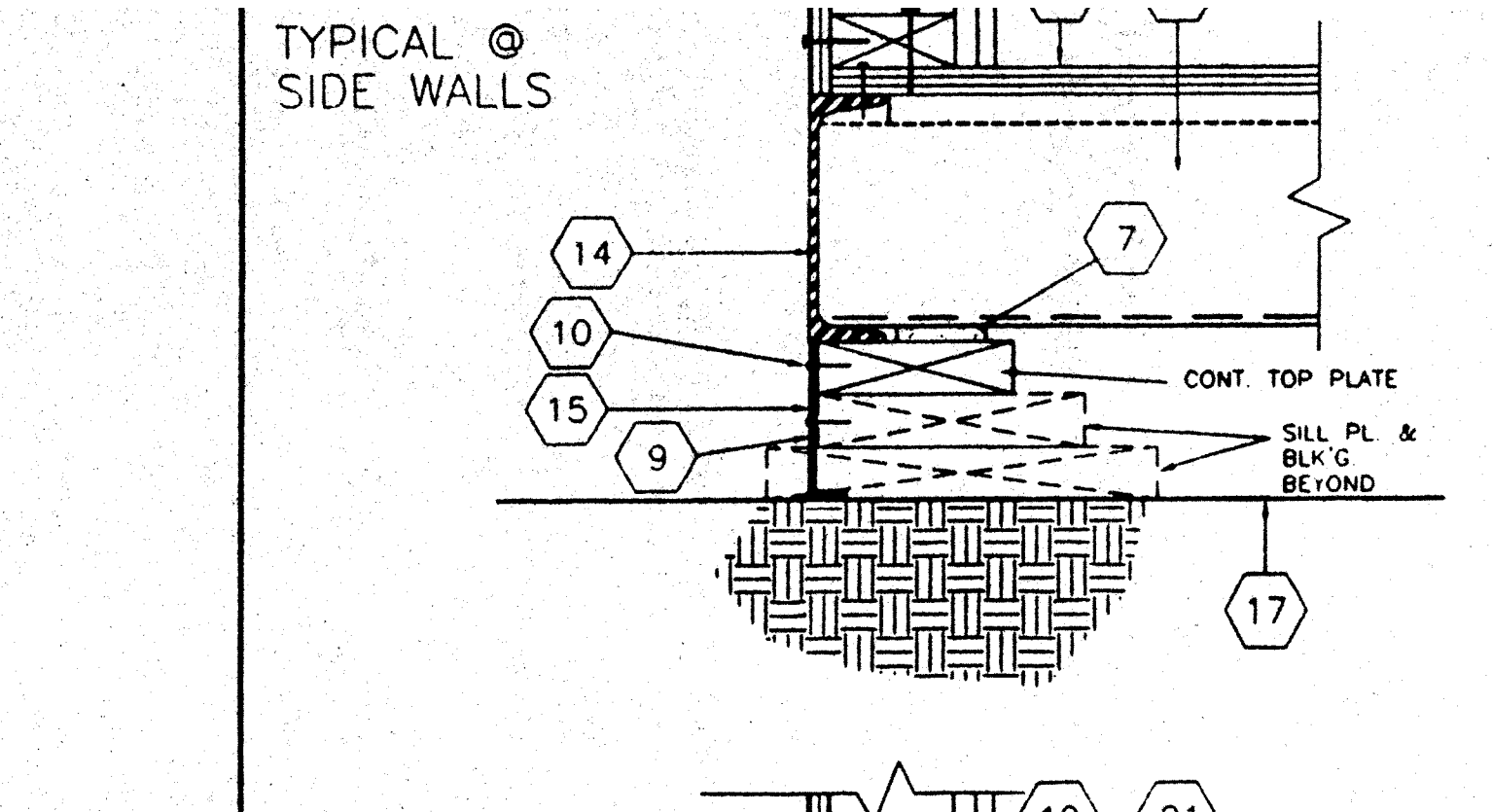
9 SCALE: 1 1/2"=1'-0"
 ALTERNATE HOLD DOWN



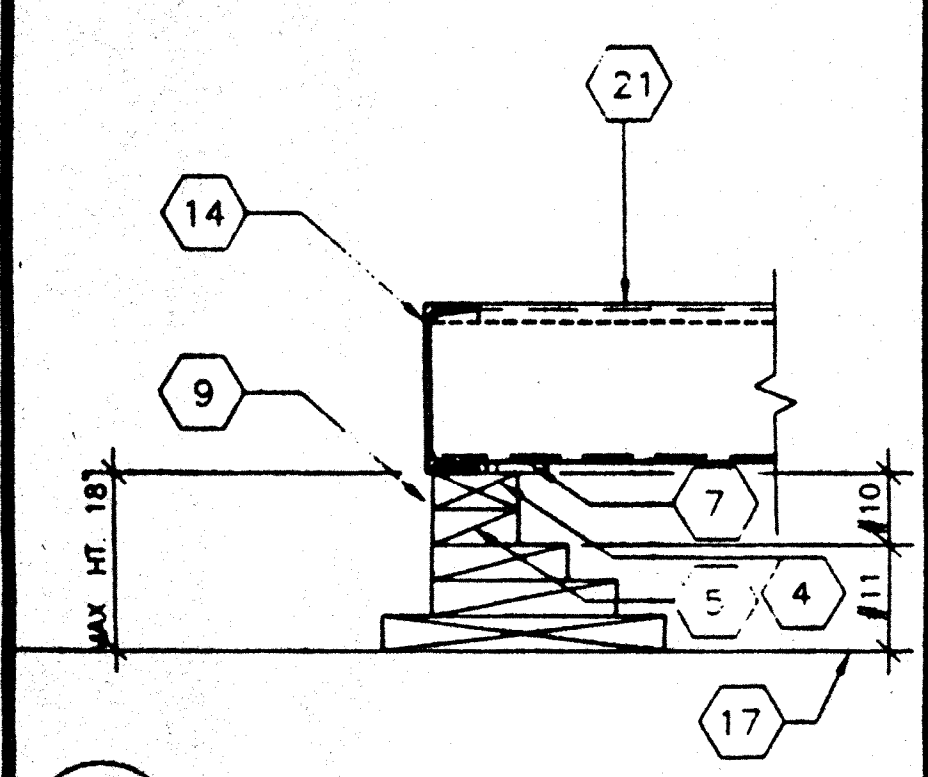
6 SCALE: 1 1/2"=1'-0"
 MODLINE PAD @ END WALL



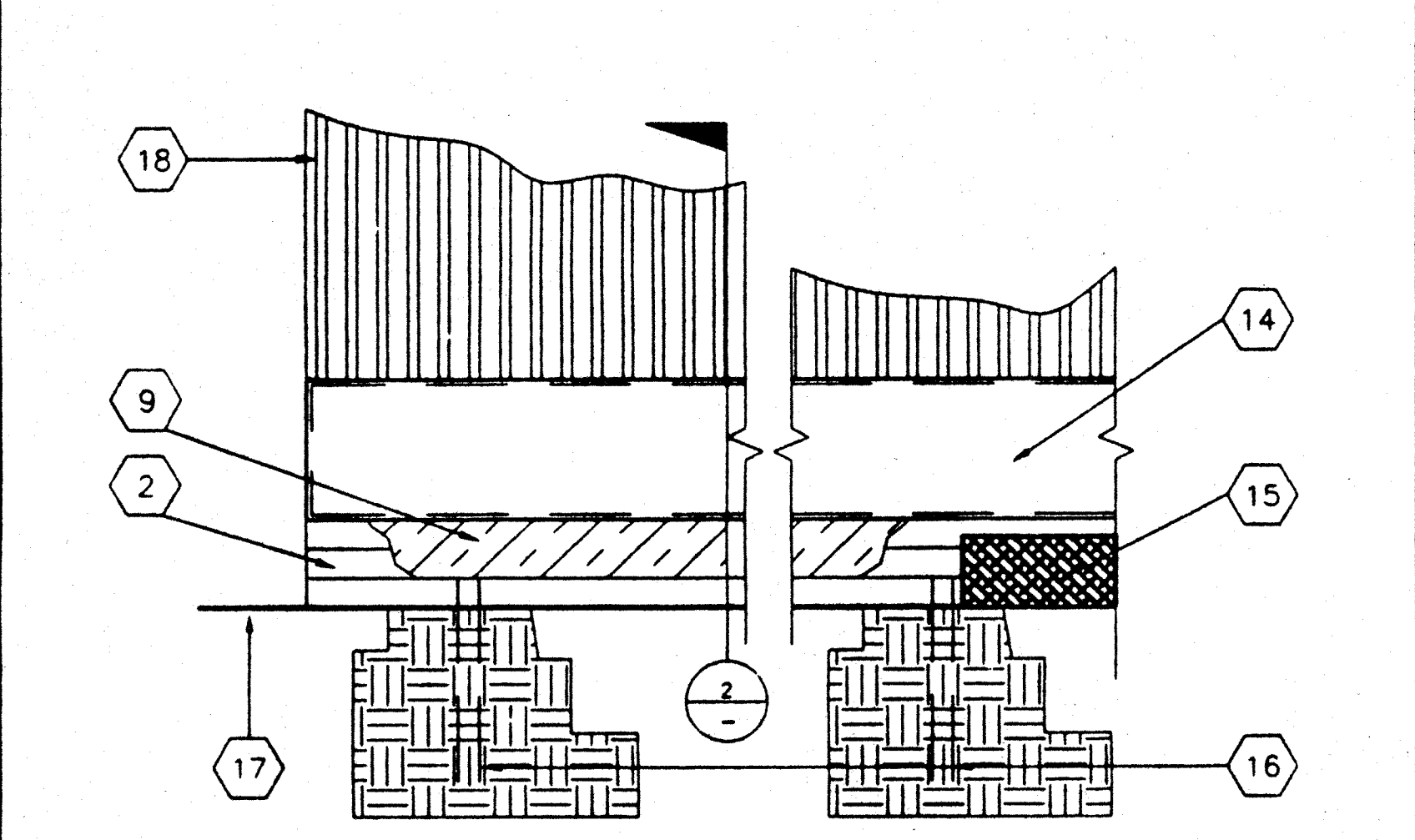
3 SCALE: 3"=1'-0"
 FOUNDATION @ END WALL



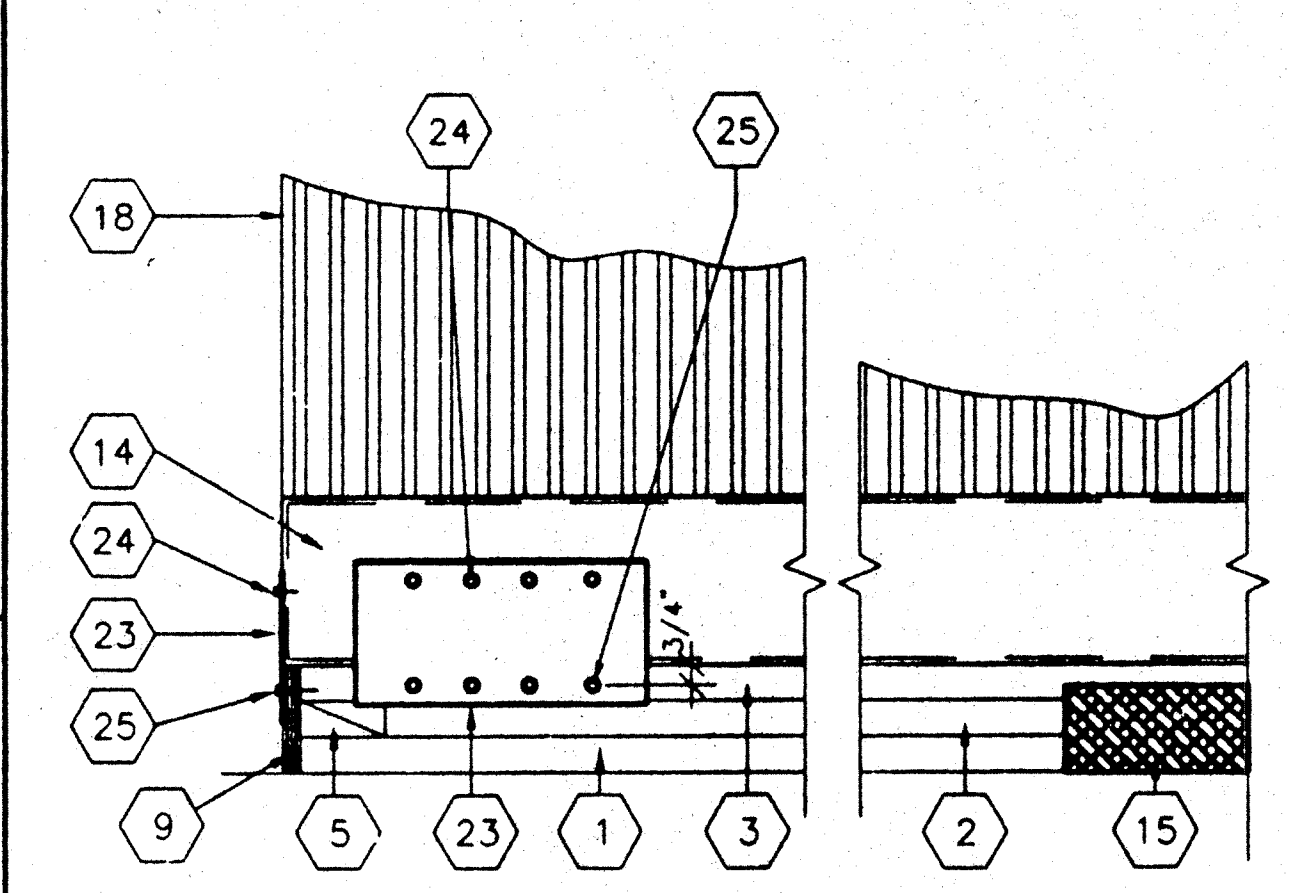
1 SCALE: NTS
 FOUNDATION VENT



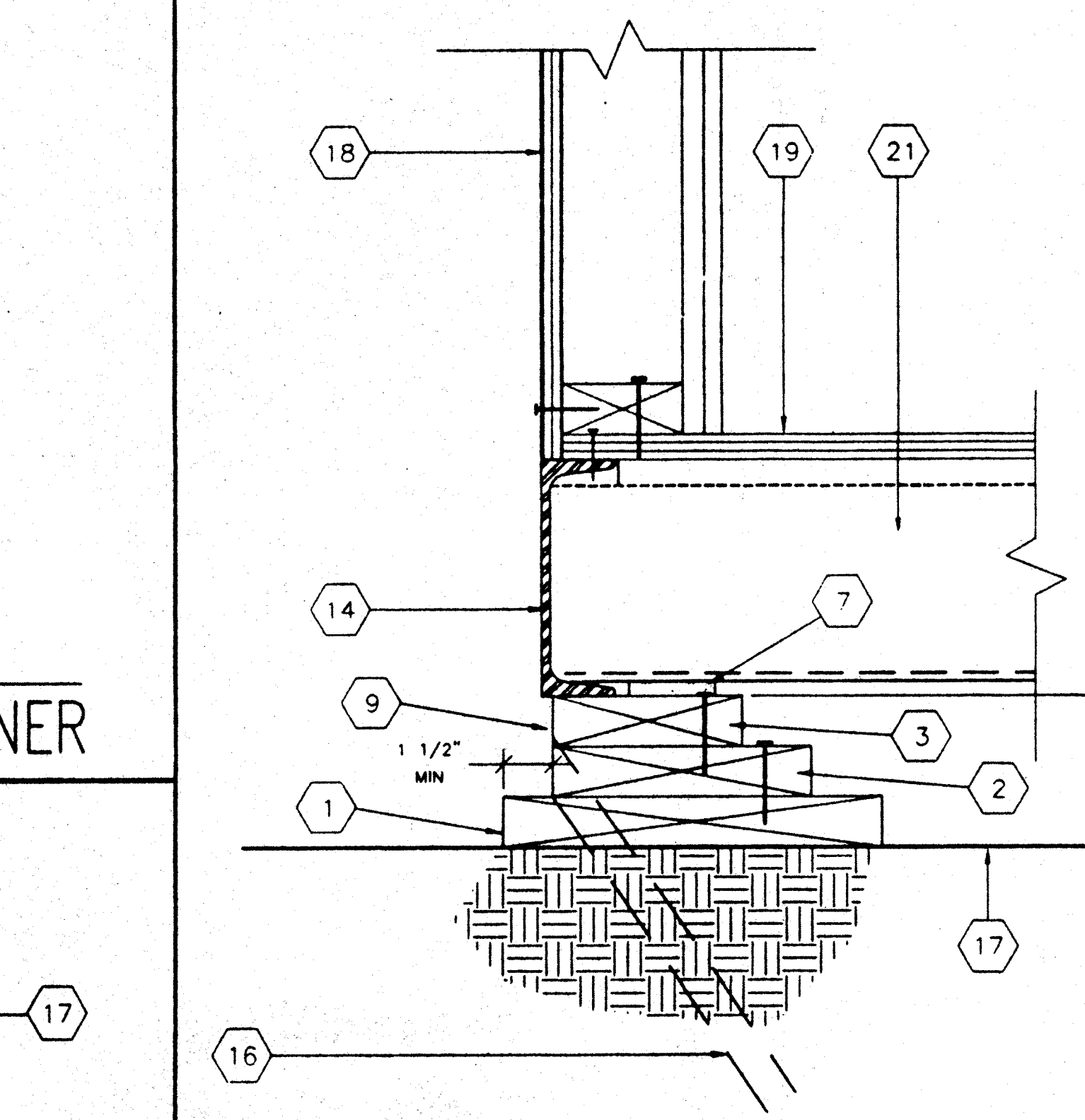
10 SCALE: 1 1/2"=1'-0"
 ADD BLK'S/SHIMS TO LEVEL FOUND.



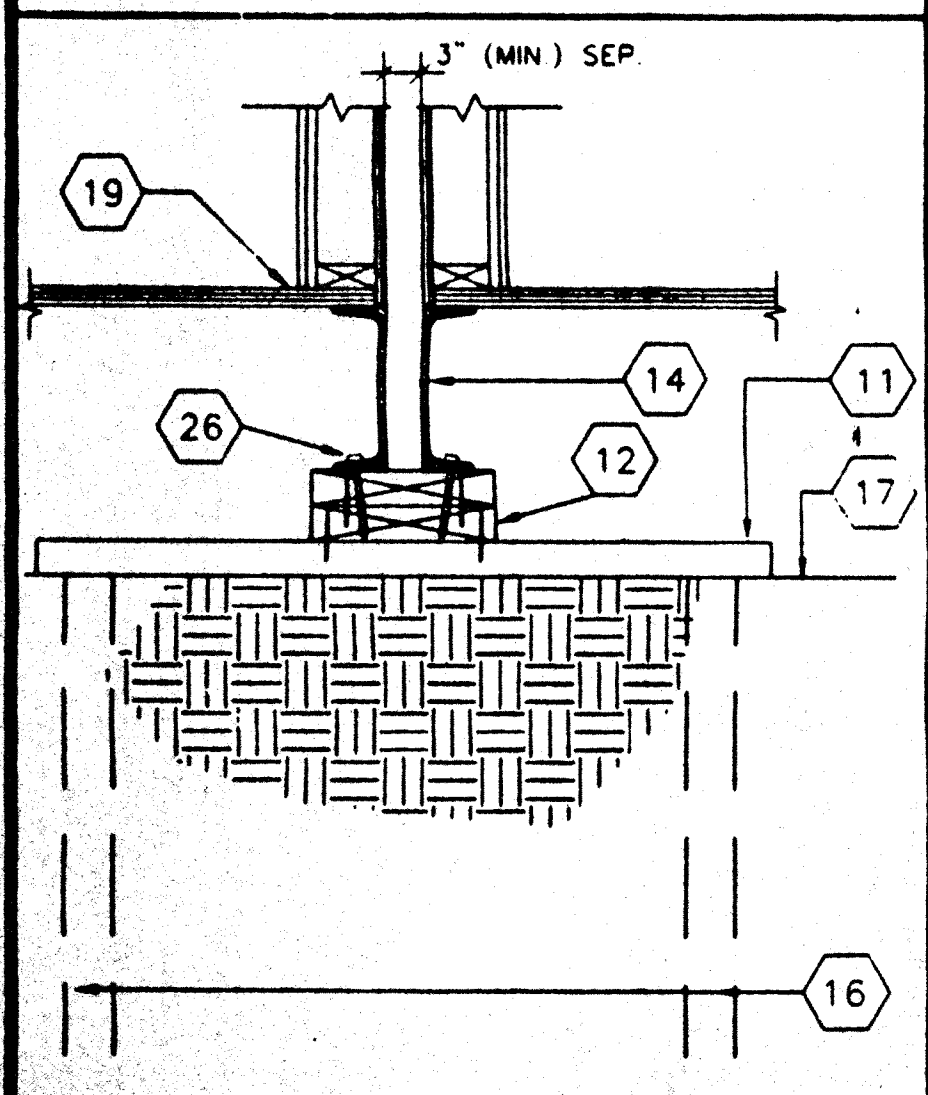
7 SCALE: 1 1/2"=1'-0"
 FOUNDATION ELEVATION @ SIDE WALL



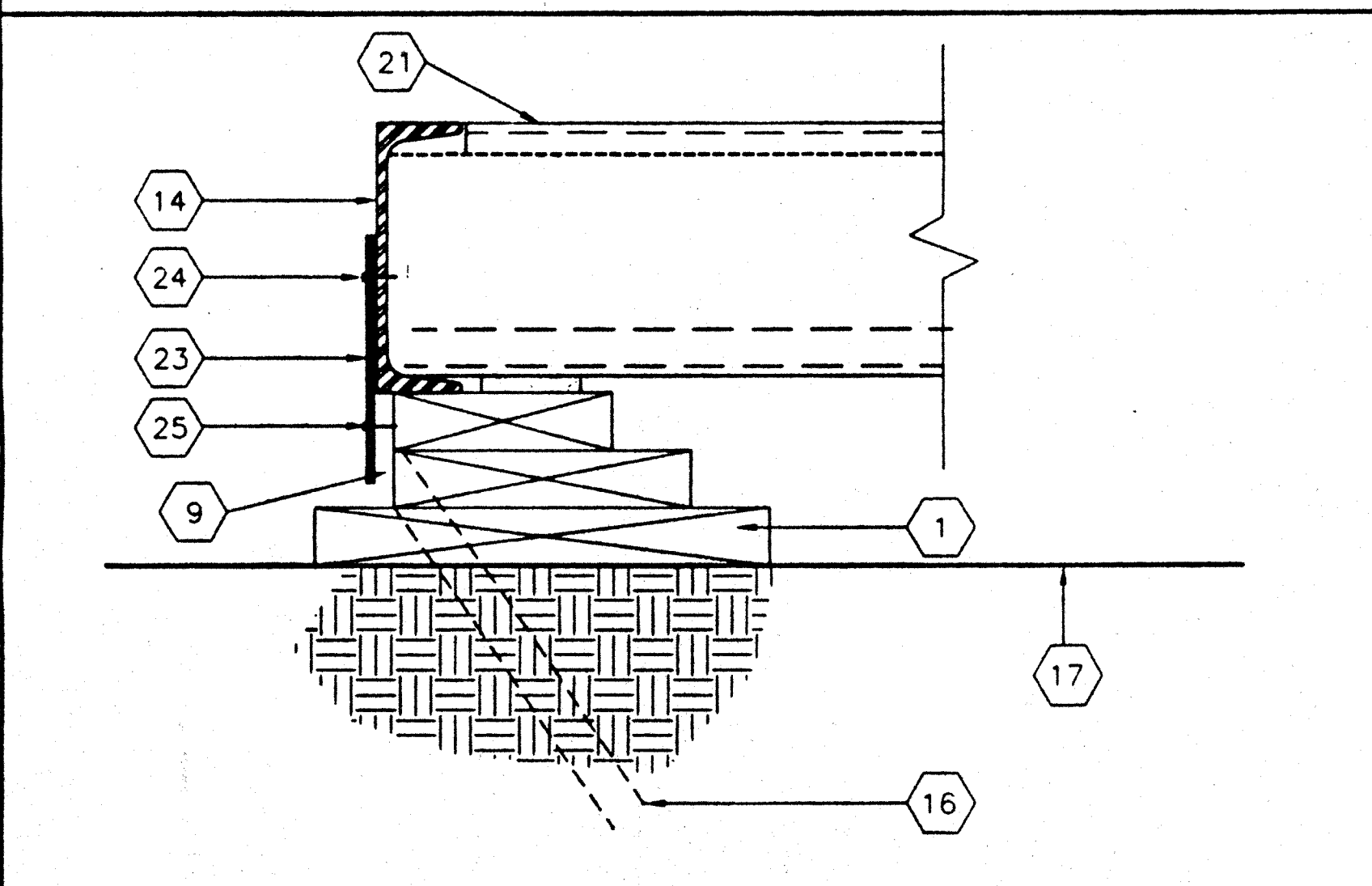
4 SCALE: 1 1/2"=1'-0"
 DETAIL @ FOUNDATION CORNER



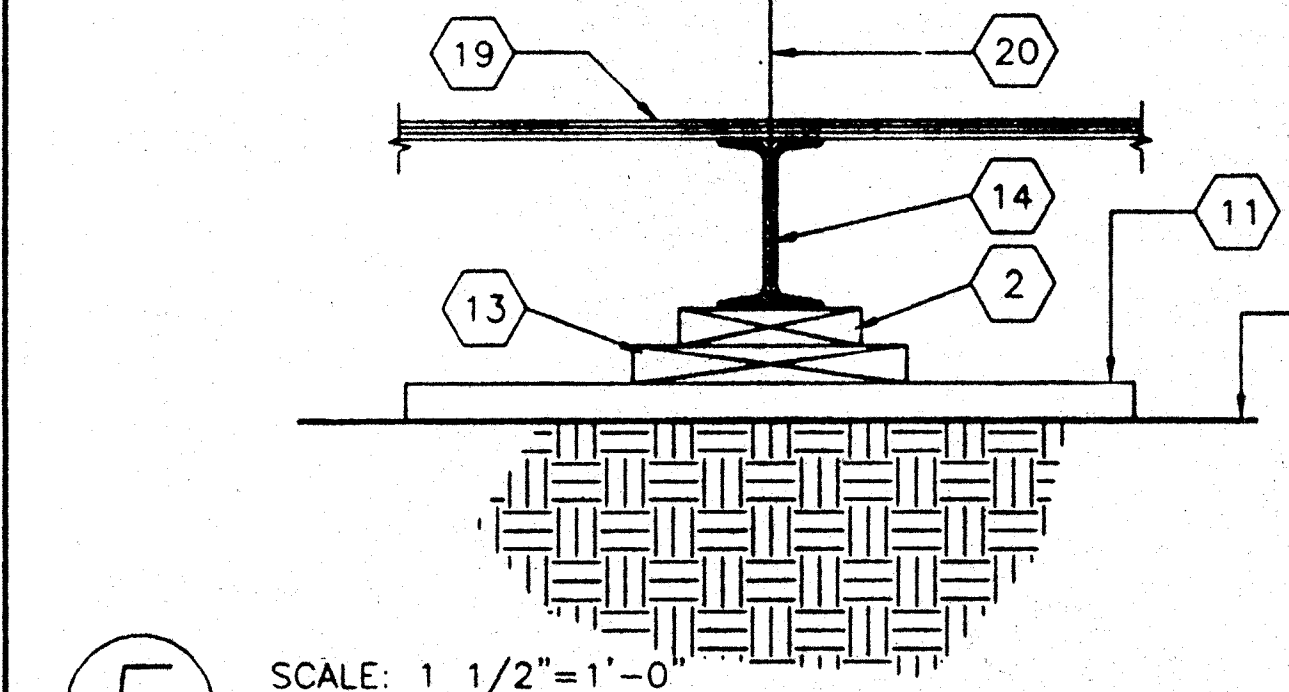
2 SCALE: 3"=1'-0"
 FOUNDATION @ SIDE WALL



11 SCALE: 1 1/2"=1'-0"
 FOUND. AT ADJ. BLDG



8 SCALE: 3"=1'-0"
 TYPICAL TIE PLATE



5 SCALE: 1 1/2"=1'-0"
 FOUNDATION PAD @ MODLINE

- 1 2X12 SILL PLATE SEE FOUND. PLAN FOR LENGTH
- 2 2X8 BLOCKING W/16d @ MAX 5" O.C. TO SILL PLATE
- 3 2X6 TOP PLATE W/16d @ MAX 5" O.C. TO BLOCKING
- 4 2X4 TOP PLATE W/16d @ MAX 5" O.C. TO SILL PLATE
- 5 2X4 BLOCKING W/16d MAX. 5" O.C. TO SILL PLATE
- 6 2X6 SILL PLATE SEE FOUND. PLAN FOR LENGTH
- 7 5/8"x2 1/2" SHIM (WHEN REQ.)
- 8 INSERT REQ'D 2X4 BLK'NG OR PLYD. SHIM W/16d @ 12" O.C. FACE NAIL
- 9 OPTIONAL - MIN. 3/8" PLYWOOD SHIRTING W/ 10d @ MIN. 4" O.C. @ ENDWALLS & 6" O.C. @ SIDEWALLS E.N. & TYP. 12" O.C. FN. PLATE TO PLATE NAILING FOR THE FOUNDATION MEMBERS CAN BE DECREASED TO 12" O.C. AND FOUNDATION BLOCKING SHALL BE RECESSED SUCH THAT THE SHIRTING SHALL BE INSTALLED FLUSH WITH THE PERIMETER FLOOR CHANNEL.
- 10 10d GALV. NAIL @ MAX. 4" O.C.
- 11 2X12X2'-6" SILL PLATE SEE FOUND. PLAN FOR QUANTITY REQ'D
- 12 2 x 10 PLATES W/ 2-16D BOX @ 6" O.C.
- 13 2X10 BLK'NG FACE OR TOE NAIL 16d @ MAX 12" O.C. ADD BLKS. OR SHIMS AS REQ'D
- 14 FLOOR FRAME BEAM SEE. STRUCTURAL
- 15 TYPICAL FOUNDATION VENT (SEE FOUNDATION PLAN FOR SIZES AND LOCATIONS).
- 16 SILL RESTRAINT 1" @ PIPE SEE FOUND. FOR LOCATION
- 17 FINISH GRADE
- 18 EXTERIOR FINISH
- 19 PLYWOOD SUBFLOOR
- 20 MOD-LINE
- 21 FLOOR-JOIST
- 22 4"x12"x10 GA. PLATE
- 23 6"x12"x10 GA. PLATE
- 24 1/4" @ S.T.S. TYP. 4-PLACES
- 25 1/4" @ X3" LG. LAG SCREW TYP. 4-PLACES
- 26 5/8" @X4" LAGS (FOR LOCATION SEE PLAN)

FOUNDATION LUMBER TO BE PRECUT AT FACTORY, LUMBER GRADES & PRESSURE TREATING TO BE VERIFIED BY INPLANT INSPECTOR

REVISIONS

ELECTRICAL	MECHANICAL	STRUCTURAL	ARCHITECT

DIVISION OF THE STATE ARCHITECT
 IDENTIFICATION STAMP
 REVISED
 OFFICE OF REGULATION SERVICES
 PC-275
 DATE 7-19-16

MODTECH INC.
 2830 BARRETT AVE.
 FERRIS, CA 92512
 PH. (909) 943-4014
 FX. (909) 940-0421

CONFIDENTIAL - THIS DOCUMENT AND THE INFORMATION CONTAINED HEREIN ARE THE PROPERTY OF MODTECH INC. UNAUTHORIZED COPYING, DISCLOSURE OR OTHER UNAUTHORIZED USES ARE PROHIBITED

JOB NO.
PC - P1 - 17
 DRAWN BY
 CHECKED BY
 DATE
F3.0

Date	12/04/18	12/19/2018	2/26/2019
85% CONSTRUCTION DOCUMENTS			
100% CONSTRUCTION DOCUMENTS - DSA			
DSA SUBMITTAL V2			

Job No.	1720520
Date	2/26/2019
Checked by	MKD
Scale	As indicated