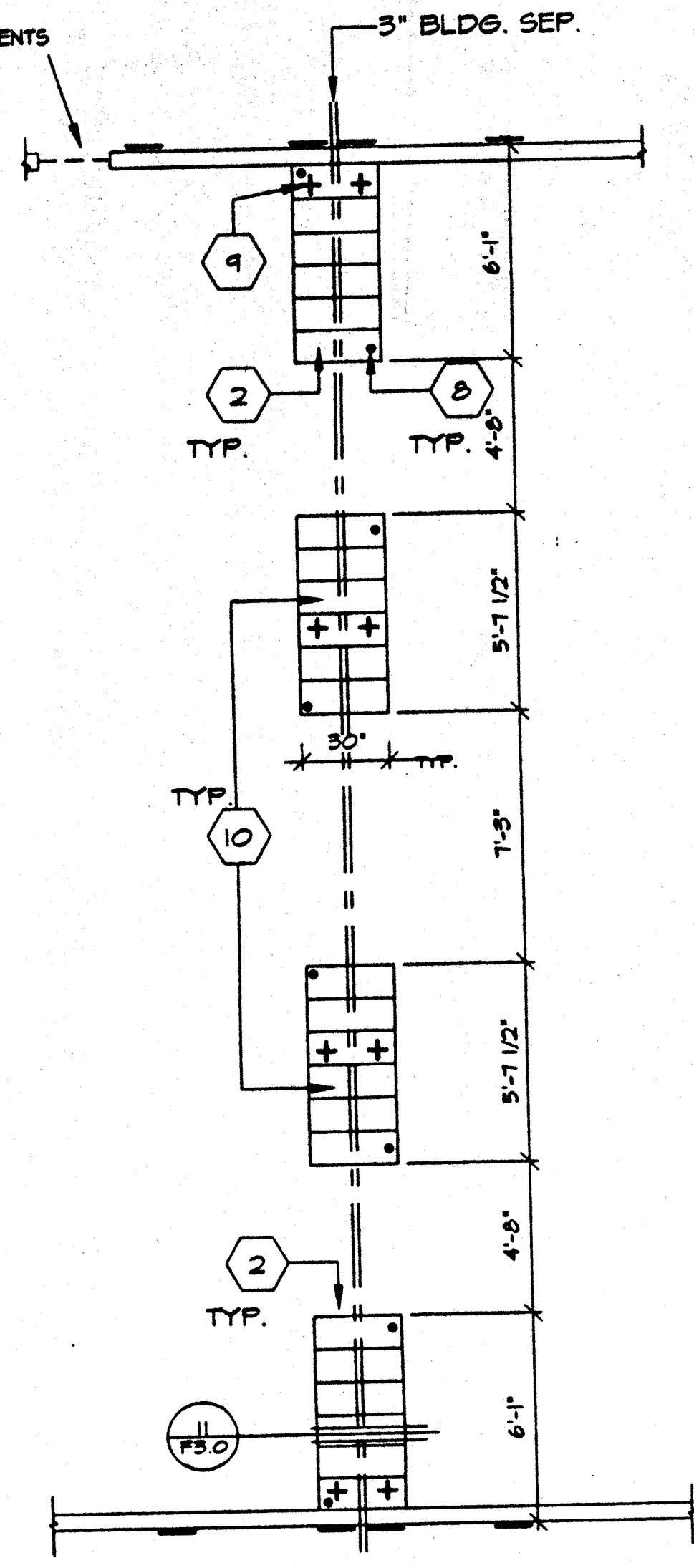
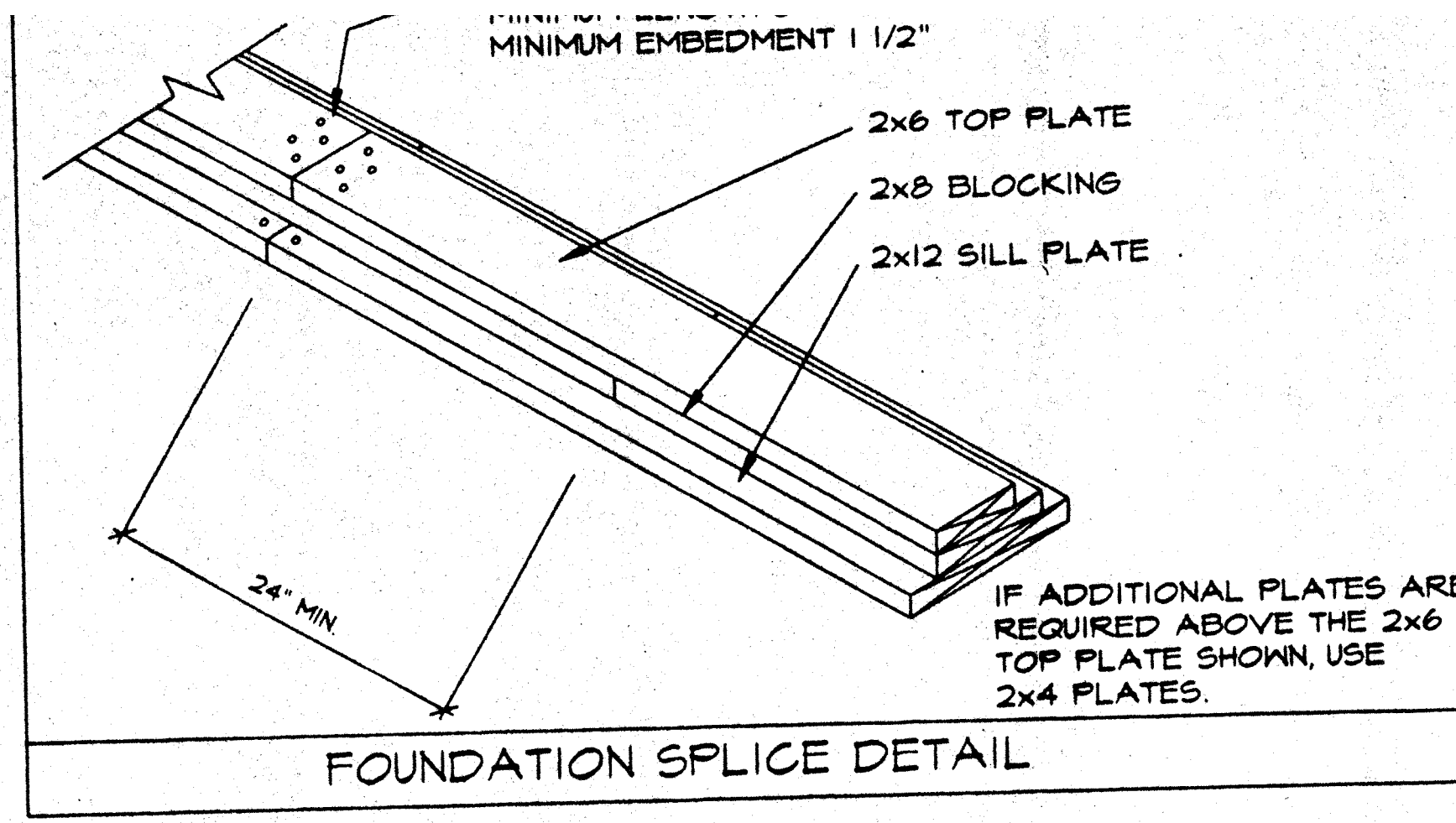
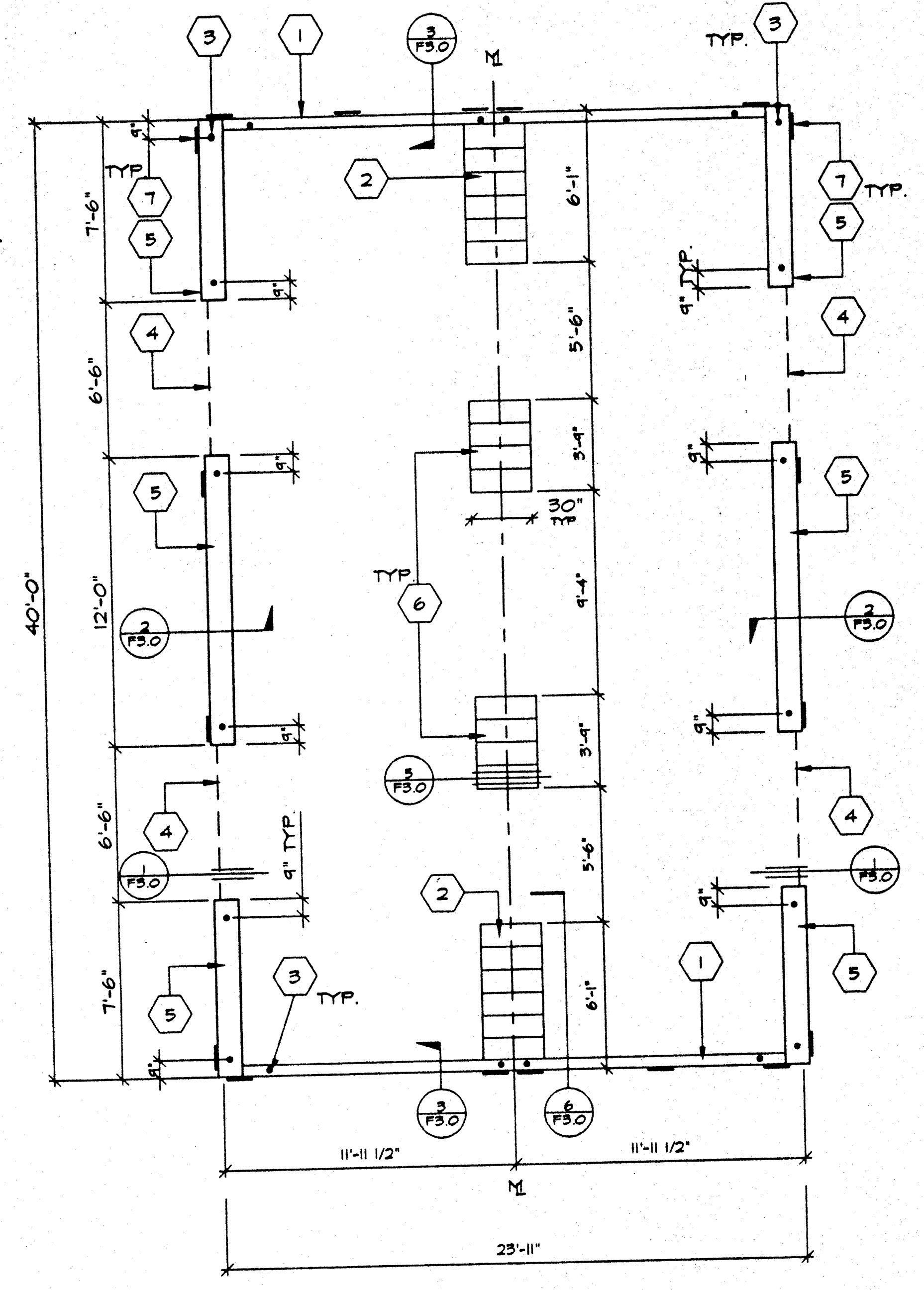


5" X 24" END WALL VENTS
 AS REQUIRED FOR ADJACENT
 BUILDING APPLICATIONS
 MIN. 18" FROM BLDG. CORNERS
 MIN. 18" FROM MOULINES
 MIN. 12" BLOCKING BETWEEN VENTS



PAD FTGS AT ADJ. BLDG.

"MACHINE APPLIED 16d FASTENERS SHALL HAVE AN EMBEDMENT OF NOT LESS THAN 1 1/2" INTO SECOND MEMBER, AND SHALL BE NOT LESS THAN 3" IN OVERALL LENGTH"
 THE ABOVE NAILS SHALL ALSO BE ACCEPTABLE FOR HAND NAILING, PROVIDED THE REQUIRED EMBEDMENT IS MAINTAINED.



- 1 2"x6" SILL PLATE (END WALL)
- 2 6- 2X12X30" LONG SILL PADS
- 3 PIPE TO GRADE (TYP.)
- 4 3" HIGH BY 6'-6" LONG VENT
- 5 2X12 SILL PLATE (SIDE WALL)
- 6 4-2X12X30" LONG SILL PADS
- 7 6"x12"x10 GA. PLATES
- 8 1" Ø PIPE EA. END EA. PAD AT ADJ. BLDG. LINE
- 9 5/8" Ø X4" LAG (4-PER BLDG. MIN.)
- 10 6- 2X12X30" LONG SILL PADS

GENERAL NOTES:

- A. SOIL RESTRAINT: ON A.C. PAVING AND ON SOIL 1" O.D. GALVANIZED PIPE AT 10'-0" 12" PENETRATION BELOW SURFACE VERTICALLY. DRILL SILL 1-1/4" MAX. PIPE MAY BE DRIVEN MAX. OF 45° ANGLE TO VERTICAL. (18-1/2" LONG PIPE REQUIRED FOR PENETRATION AT 45° ANGLE)
- B. ON CONCRETE PAVING HILTI DS 82-PI0 THRU SILL PLATE:
 END WALLS: 8" O.C.
 SIDE WALLS: 22" O.C.
- C. WHERE SHIM STOCK IS REQUIRED FOR LEVELING USE 1/4", 1/2", OR 3/4" THICK PLYWOOD SAME WIDTH AS BLOCK. P.T.
- D. VERIFY DRAINAGE TO PREVENT WATER FROM PONDING BENEATH THE STRUCTURE WITH DISTRICT ARCHITECT SITE PLANS
- E. ALL FOUNDATION MATERIAL SHALL BE HEM FIR
 GROUND CONTACT: LP-22 (CCA 40)
 ABOVE GROUND: LP-2 (CCA 25)
- F. FOUNDATION DESIGNED FOR 1000 PSF SOIL BEARING PRESSURE PER ORS IR 23-6.
 ABOVE GROUND: LP-2

VENT CALCS.
 BLD'S SIZE 24' X 40' = 960 sq
 VENTILATION REQ'D 960 ÷ 150 = 6.4 sq
 3" X 6'-6" VENT = 1.625 sq
 4 VENTS X 1.625 sq = 6.5 sq
 6.5 sq > 6.4 sq

FOUNDATION (WOOD SILL)
 24 x 40 - 50 PSF LL SCALE 1/4"=1'-0"

REVISIONS	ELECTRICAL	MECHANICAL	STRUCTURAL	ARCHITECT	DIVISION OF THE STATE ARCHITECT
▲					
▲					
▲					
▲					
▲					
▲					

MODTECH INC.
 2930 BARRETT AVE.
 PERRIS, CA. 92572
 PH. (909) 943-4014
 FX. (909) 940-0427

CONFIDENTIAL - THIS DOCUMENT AND THE INFORMATION CONTAINED HEREIN ARE THE PROPERTY OF MODTECH INC. UNAUTHORIZED COPYING, DISCLOSURE, OR OTHER UNAUTHORIZED USES ARE PROHIBITED.

JOB NO.
PC - P1 - 16

FOUNDATION PLAN

DRAWN BY
 DATE
 CHECKED BY
 DATE

FO!

MADISON ELEMENTARY SCHOOL
 INTERIM HOUSING PORTABLES
 3635 Madison Street
 Riverside, CA 92504
 Developed for
 Riverside Unified School District

Date	Revision
12/04/18	
12/19/2018	
2/26/2019	

95% CONSTRUCTION DOCUMENTS - DSA
 100% CONSTRUCTION DOCUMENTS - DSA
 DSA SUBMITTAL V2

Job No. 1720520
 Date 2/26/2019
 Checked by MKD
 Scale As indicated