

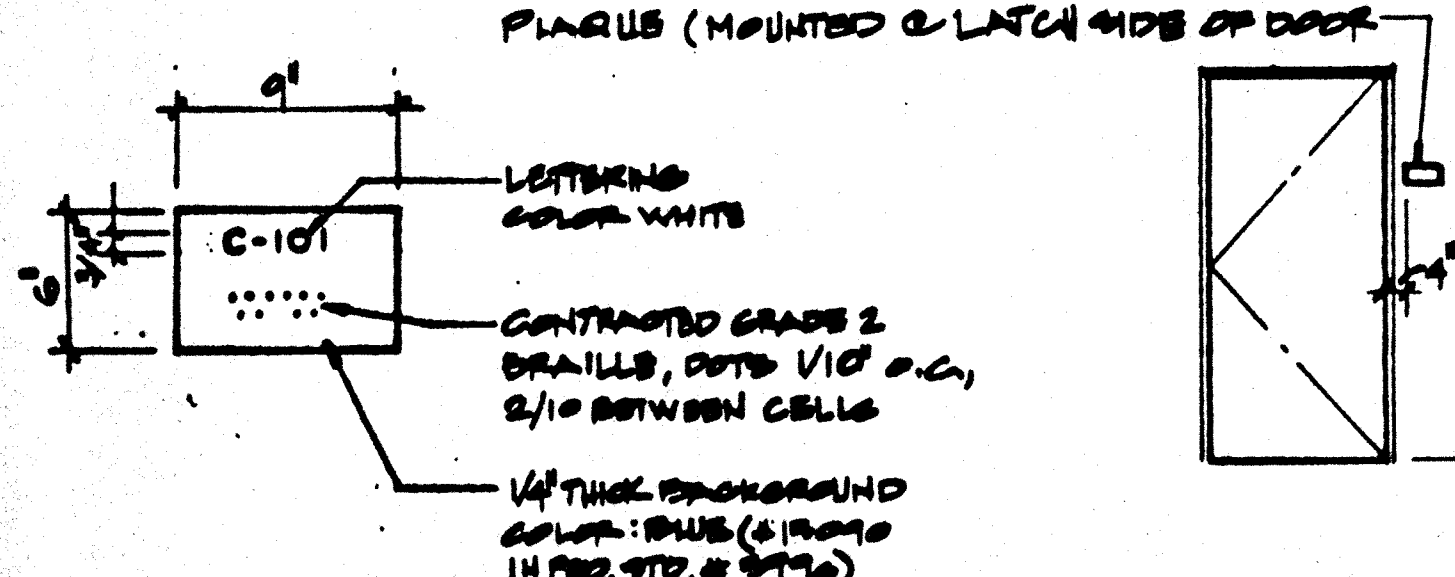
DOOR SCHEDULE **DOOR NOTES** **ROOM FINISH SCHEDULE**

DOORS				FRAMES				NOTE NO.
DOOR NO.	FRAME OPENING SIZE	MATERIAL	TYPE	FIRE PROTECTION RATING	HARDWARE SET NO.	MATERIAL	HEAD DETAIL	
1	5'-0" X 6'-6"	HM	1			HM	1/16-0	

NOTES:
 1. DOOR HANDLES FOR LOCKSETS TO BE CENTERED @ 36" A.F.F. & DEADBOLTS @ 44" A.F.F.
 2. HARDWARE TO BE OPENABLE FROM THE INSIDE WITHOUT ANY SPECIAL KNOWLEDGE OR EFFORT. LEVERS TO RETURN TO WITHIN 1/2" OF DOOR.
 3. ALL DOORS SHALL BE 1-3/4" THICK, U.N.O.
 4. DOUBLE LETTERS IN SCHEDULE, INDICATES A PAIR OF DOORS.
 5. SAFETY GLASS, CLEAR.
 6. WIRE GLASS
 7. UNDERCUT DOOR
 8. FIXED LOUVER
 9. FUSIBLE LINK LOUVER
 10. VISION PANEL
 11. CLOSURE SHALL BE SET FOR MAX. OPENING PRESSURE OF 20 LBS. EXTR. DR. & 15 LBS. INTR. DRG.

ROOM NO.	ROOM NAME OF AREA	FINISHES						REMARKS
		FLOOR	BASE	WALLS				
1	CLASSROOM	A	D	F	F	F	F	

MATERIAL & FINISH KEY	NOTES
(A) - CARPET PER STATE OF CALIFORNIA SPEC. COMPLYING WITH GROUP 1, TYPE A OR TYPE B, CLASS 2, DENSITY 4600, DIRECT GLUE DOWN WITH 4" TOPSET BASE.	DOOR SPECS. EXTERIOR FRAME SPECS. SEE SPECS
(B) - RESILIENT - SPECIFY OR EQUAL	
(C) - VCT - ARMSTRONG STANDARD OR EXCELON	
(D) - 4" BURKE	
(E) - 6" BRIGANTINE OR SANDOVAL	
(F) - 1/2" VINYL TACKBOARD CLASS 1 OVER 1/2" GYP. BOARD BACKING	
(G) - 1/2" W.R. GYP. BOARD TAPE TEXTURE WITH PAINTED FINISH	
(H) - 5/8" W.R. GYP. BOARD TAPE TEXTURE WITH PAINTED FINISH	
(I) - 1/2" GYP. BOARD TAPE TEXTURE WITH PAINTED FINISH	
(J) - 5/8" GYP. BOARD TAPE TEXTURE WITH PAINTED FINISH	
(K) - 1/8" MARLITE OVER 1/2" W.R. GYP BOARD	
(L) - ACOUSTICAL LAY IN GRID CEILING PANELS (SEE SPECIFICATIONS)	



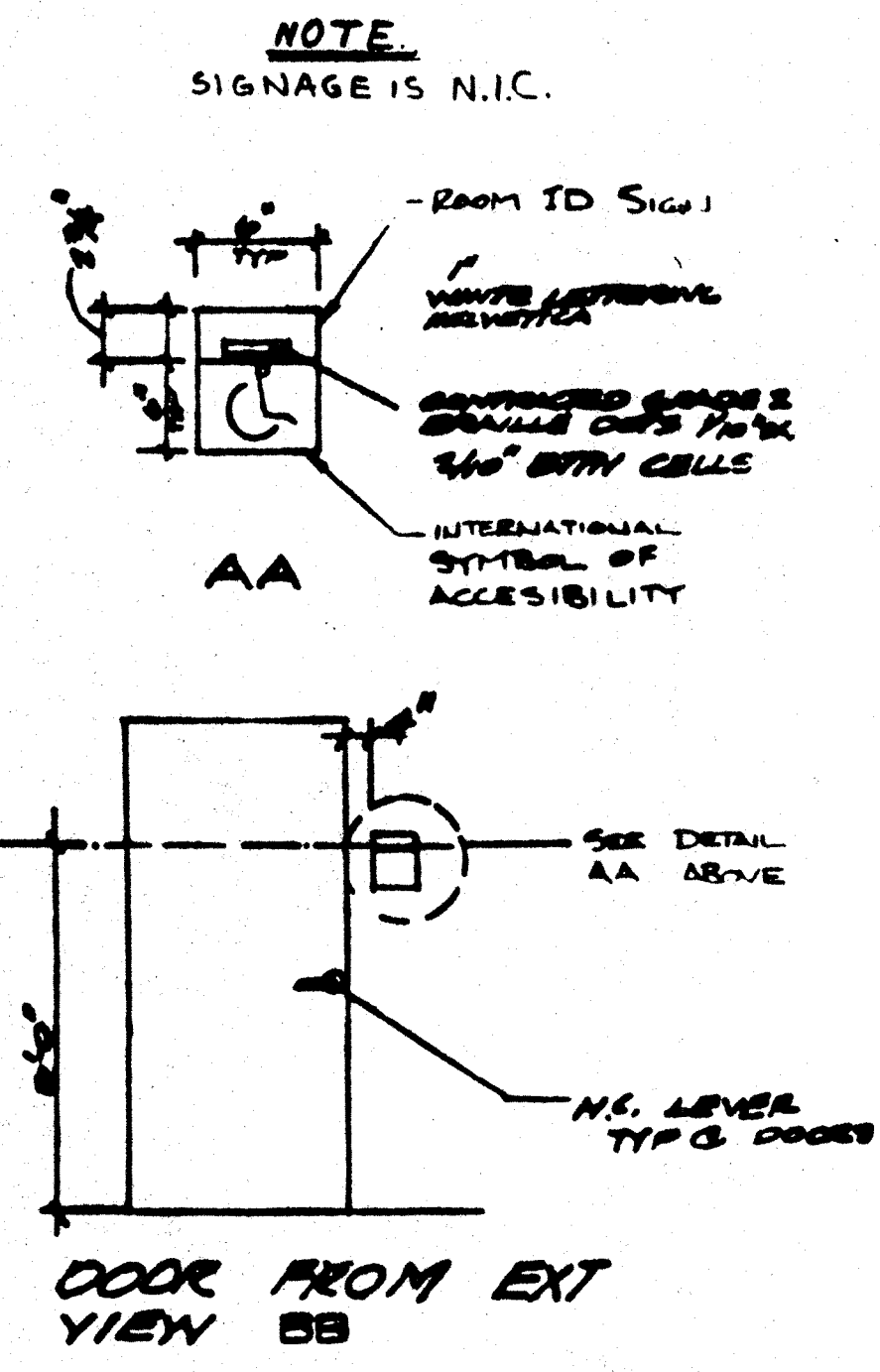
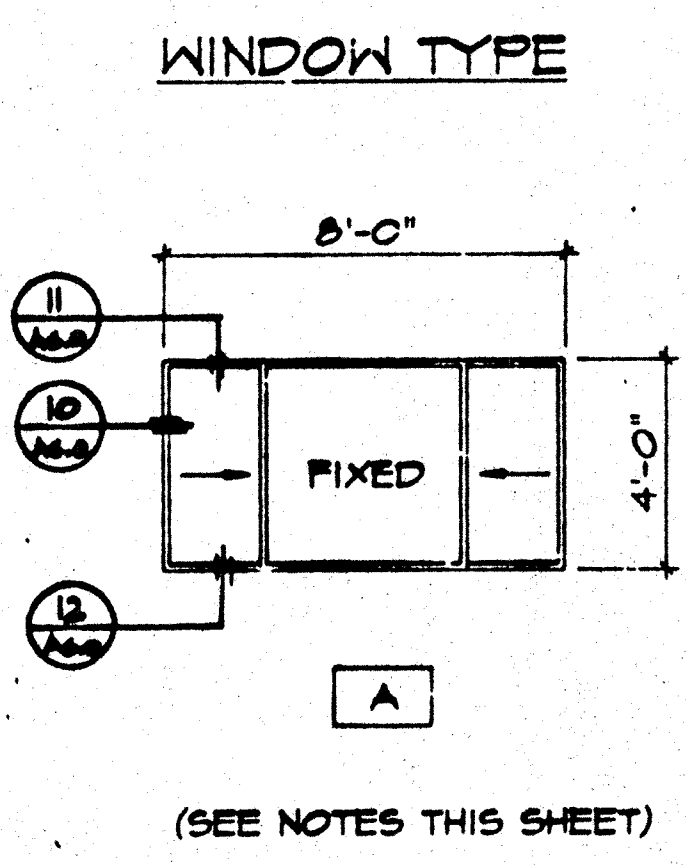
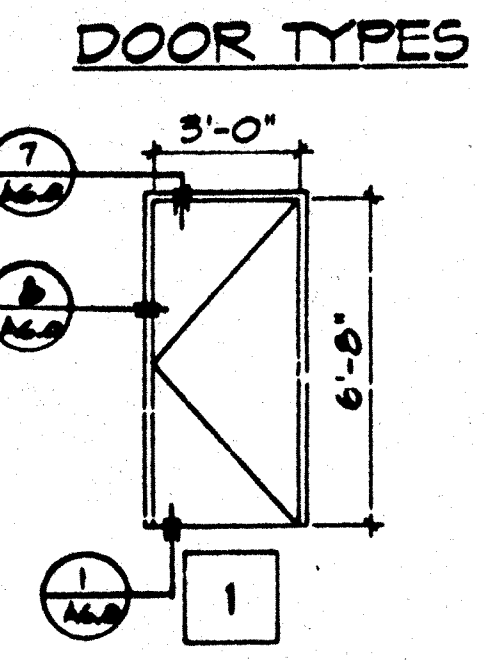
ABBREVIATIONS
 HM - HOLLOW METAL
 AL - ALUMINUM
 SST - STAINLESS STEEL
 STL - STEEL
 WMF - WINDOW WALL FRAME
 SC - SOLID CORE WOOD
 HC - HOLLOW CORE WOOD
 SCL - SOLID CORE WOOD W/ LAMINATED PLASTIC FACES.

DOOR IDENTIFICATION @ ALL MAIN ENTRY DOORS (CLASSROOMS INCLUDED) *NIC

WINDOW SCHEDULE					
QTY	WIDTH	HEIGHT	TYPE	FINISH	GLASS TYPE
2	8'-0"	4'-0"	XGX	ANODIZED 1/32" MIN SOLAR GRAY 46%	SLIDER (XGX) FIXED DOUBLE HUNG SLIDER (XO)

NOTE FOR ALL EXIT DOORS
 ALL EXIT DOORS SHALL BE OPENABLE FROM THE INSIDE WITHOUT THE USE OF A KEY OR ANY SPECIAL KNOWLEDGE OR EFFORT

HARDWARE SCHEDULE	
HARDWARE PACKAGE #1	
LOCKSET - FOR 2ND AND 3RD UNITS: CAL ROYAL LX-90 OR EQUAL FOR 2ND AND 3RD UNITS: CAL ROYAL 8000 PLANO-HYD. OR EQUAL	
BUTTS - 1-1/2 PR. HAGER 1279 4-1/2 X 4-1/2 NRP 26D OR EQUAL	
CLOSER - NORTON 1501 RF, CAL ROYAL 9000 OR EQUAL	
THRESHOLD - FEMKO 271A OR EQUAL, 688 1/16"	
DOOR BOTTOM - FEMKO 216AV OR EQUAL	
WEATHERSTRIP - FEMKO 216AV OR EQUAL	
HARDWARE PACKAGE #2 (INTERIOR)	
LOCKSET - (PASSAGE) CAL ROYAL LX-90 GRADE 1 OR EQUAL WITH REVERSE LEVER	
BUTTS - 1-1/2 PR. HAGER 1279 4-1/2 X 4-1/2 26D	
HARDWARE PACKAGE #3 (INTERIOR-OFFICE LOCKABLE)	
LOCKSET - CAL ROYAL LX-90 GRADE 1	
BUTTS - 1-1/2 PR. HAGER 1279 4-1/2 X 4-1/2 26D	
HARDWARE PACKAGE #4 (INTERIOR-BATH/PRIVATE)	
LOCKSET - CAL ROYAL LX-20 GRADE 1	
BUTTS - 1-1/2 PR. HAGER 1279 4-1/2 X 4-1/2 26D	
HARDWARE PACKAGE #5 (INTERIOR-STORAGE)	
LOCKSET - CAL ROYAL LX-04 GRADE 1	
BUTTS - 1-1/2 PR. HAGER 1279 4-1/2 X 4-1/2 26D	
FINISH HARDWARE: CAL ROYAL 8000 OR EQUAL	



WINDOWS SPECS: 8040 XOX ANODIZED ALUM. OR BRONZE GLAZING, 1/32" MIN. TEMPERED GLASS OF SOLAR GRAY WITH A LIGHT TRANSMISSION FACTOR OF 46%. ALL OPERABLE SASH SHALL HAVE ALUMINIUM SCREENS.

NOTES:
 SUB-FLOOR PREP:
 PREPARATION FOR SUB FLOOR TO ACCEPT FINISH FLOORING IS BY FLOORING CONTRACTOR. PLYWOOD SUB FLOOR IS 2.1" PLYWOOD, OUTER PLY IS PLUGGED AND TOUCH Sanded, ANY DEFORMITIES DUE TO STANDARD CONSTRUCTION PRACTICES SHALL BE FILLED AND SANDED BY FLOORING CONTRACTOR. THE JOINT AT THE MODULE JOINING SHALL NOT BE LARGER THAN 1/8" AND SHALL BE FILLED AND SANDED BY FLOORING CONTRACTOR.
EXTERIOR FINISH: EXTERIOR PLYWOOD SIDING APA COMPARABLE, RATED B-C GRADE EXTERIOR TYPE SIDING. PANEL THICKNESS SHALL BE A MINIMUM OF 1/2". SHEATHING NAIL W/ GALV. BOX NAILS - 8d @ 6" O.C. EDGES, 4d @ 12" O.C. IN FIELD. STYLING: PLAIN, V-GROOVED, OR REVERSE BOARD & BATTEN.

FOR REFERENCE ONLY

MADISON ELEMENTARY SCHOOL
 INTERIM HOUSING PORTABLES
 3035 Madison Street
 Riverside, CA 92504
 Developed for
 Riverside Unified School District

ARCHITECT	ELECTRICAL	STRUCTURAL	MECHANICAL	FIRE MARSHAL	ACCESS COMPLIANCE	STRUCTURAL SAFETY	PC-P1-11	DATE	DATE	DATE	DATE
							PC-P1-11	12/04/18	12/19/2018	2/26/2019	2/26/2019
							MODTECH INC.	FINISH SCHEDULE		A5.0	

Date	12/04/18
Date	12/19/2018
Date	2/26/2019
Date	2/26/2019
Job No.	1720520
Date	2/26/2019
Checked by	MKD
Scale	As indicated